



Co-Gen Rail Transformation Project



About Us

Central Pines Regional Council, formally Triangle J Council of Governments, is a resource and support hub for local governments, community members, and partners across Chatham, Durham, Johnston, Lee, Moore, Orange, and Wake counties. Our work is rooted in the belief that our region thrives when we come together with a common vision and plan for the future. We advance this goal through the support of regional policy, collaboration, and technical assistance.

On any given day, CPRC works with our partners to provide support across our six focus areas:

- Aging & Human Services
- Community & Economic Development
- Environment & Resilience
- Housing
- Member Support & Strategy
- Mobility & Transportation

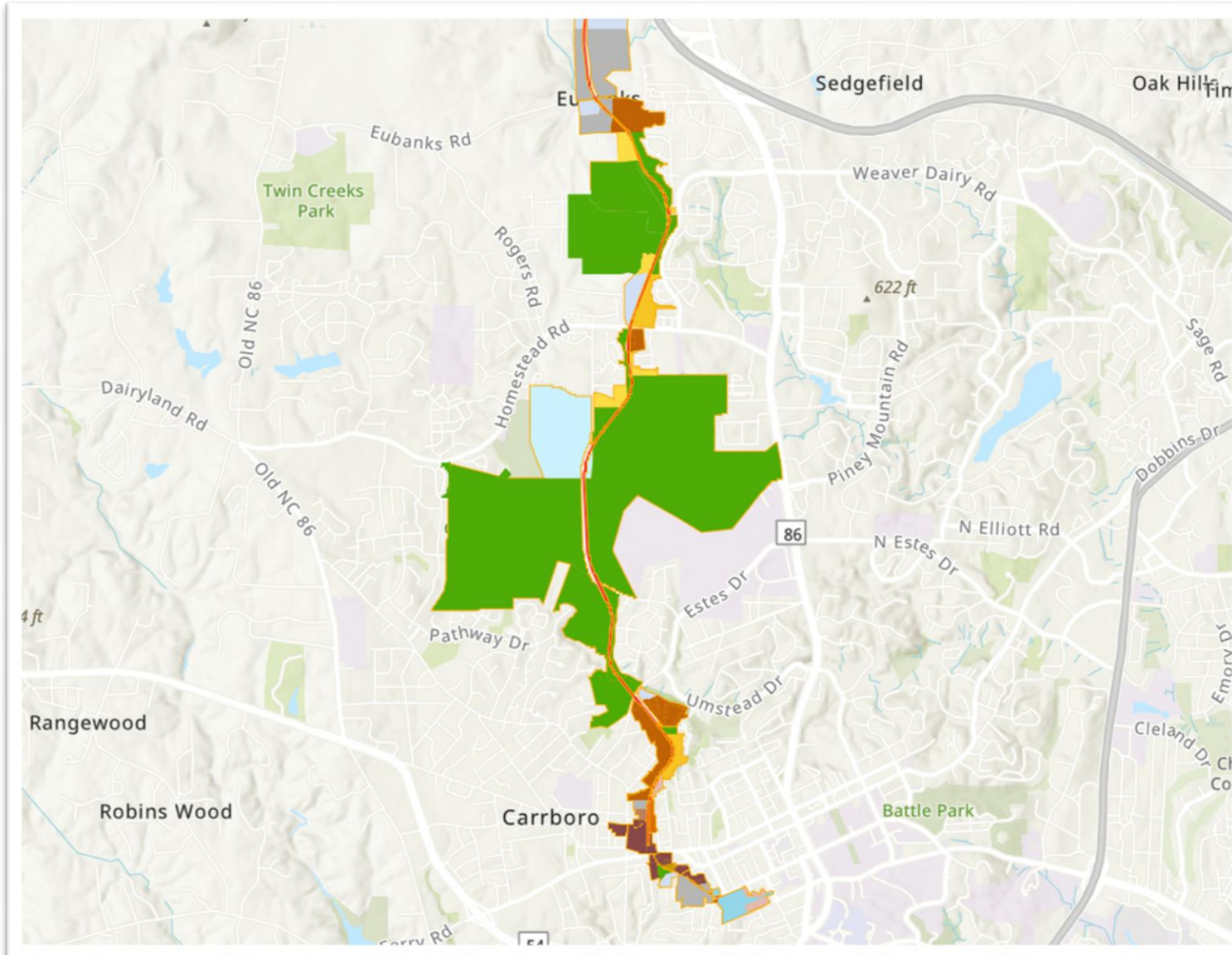


Project Background

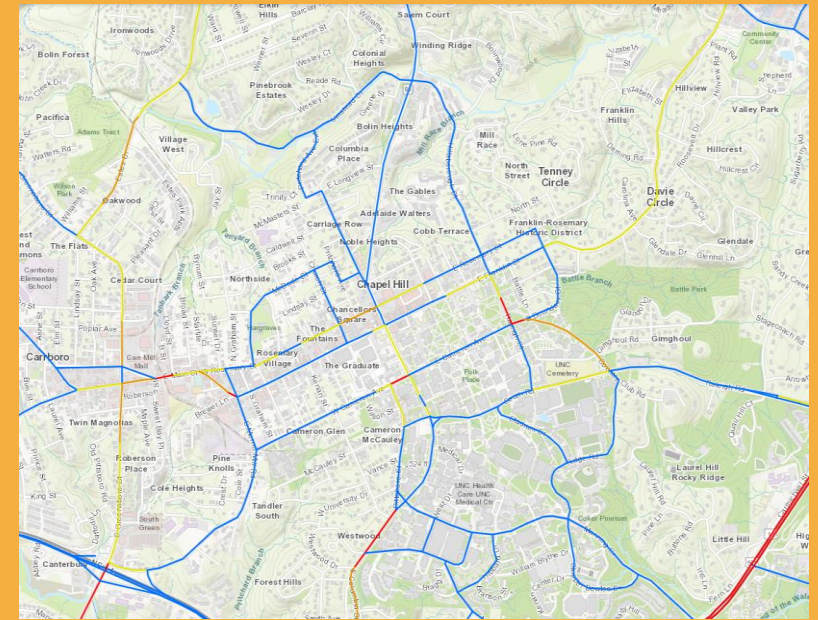
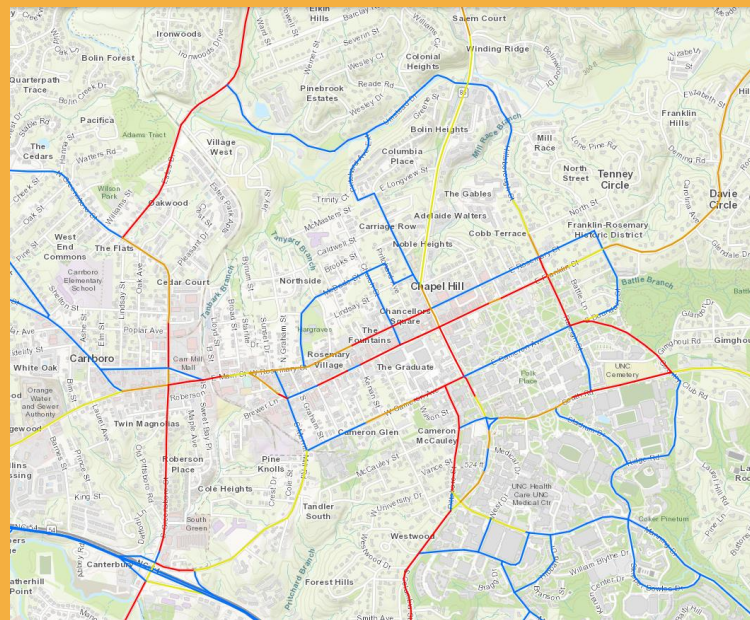
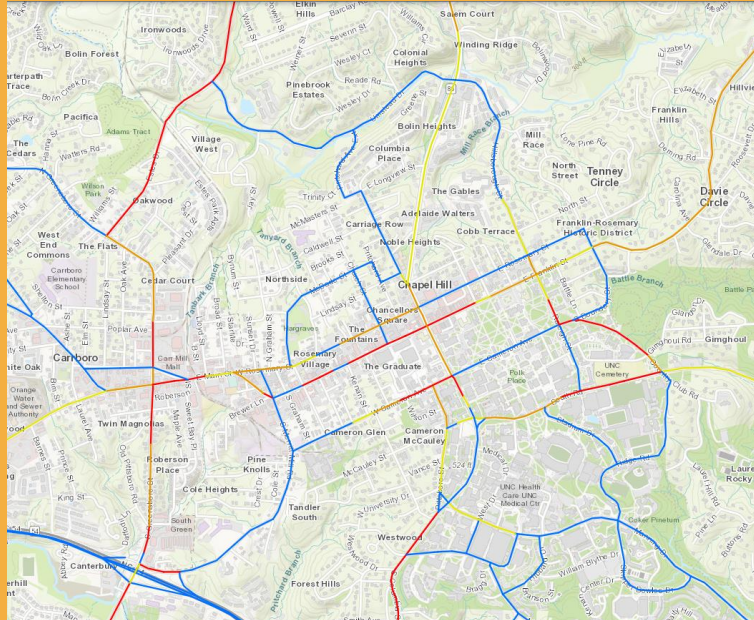
The Southern Environmental Law Center and UNC-Chapel Hill entered into contracts with Central Pines Regional Council to jointly cover the cost to facilitate the development of strong grant applications for long-term economic and transportation planning activities along the Co-Gen Rail Line. Transforming the Co-Gen (UNC) rail line into a multi-modal greenway can bring extensive opportunity and advance collective goals to promote housing, economic development, and connectivity across each jurisdiction.

Project Scope

- Grant Identification and Analysis
- Group Facilitation and Visioning
- Grant Application Development



- Protected Green Space (POS)
- Farms and Forest (FF)
- Rural Living (RL)
- Conservation Neighborhood (CON)
- Rural Crossroads (RCR)
- Mobile Home Neighborhood (MHP)
- Larger Lot Residential Neighborhood (LLRN)
- Midsized Lot Residential Neighborhood (MLRN)
- Smaller Lot Residential (SLRN)
- Mixed Density Residential (MRN)
- Lodging (L)
- Neighborhood Commercial (NCC)
- Community Commercial (CCC)
- Office Center (OC)
- Regional Employment Center (REC)
- Multifamily Residential (MFRN)
- Urban Neighborhood (UN)
- Mid-rise Residential (MRR)
- High Rise Residential (HRR)
- Urban Residential (UR)



Adopted Congestion Maps

2050 No Build, 2050 Adopted, and 2016

Local Involvement



It is critical for all parties that own property or control land use decisions along the rail line to be involved in the process.

Actions

- ☐ Approval of Memorandum of Agreement between Carrboro, Chapel Hill, Orange County, UNC Chapel Hill, and Southern Environmental Law Center.
- ☐ Appointment of Council Member to Co-Gen Rail Redevelopment Policy Steering Committee
- ☐ Coordination with Central Pines Regional Council on grant applications, complimentary projects and initiatives, and data.



Sustainable Carolina



Mike Piehler
UNC Chief Sustainability Officer
Director, UNC Institute for the Environment
sustainable.unc.edu

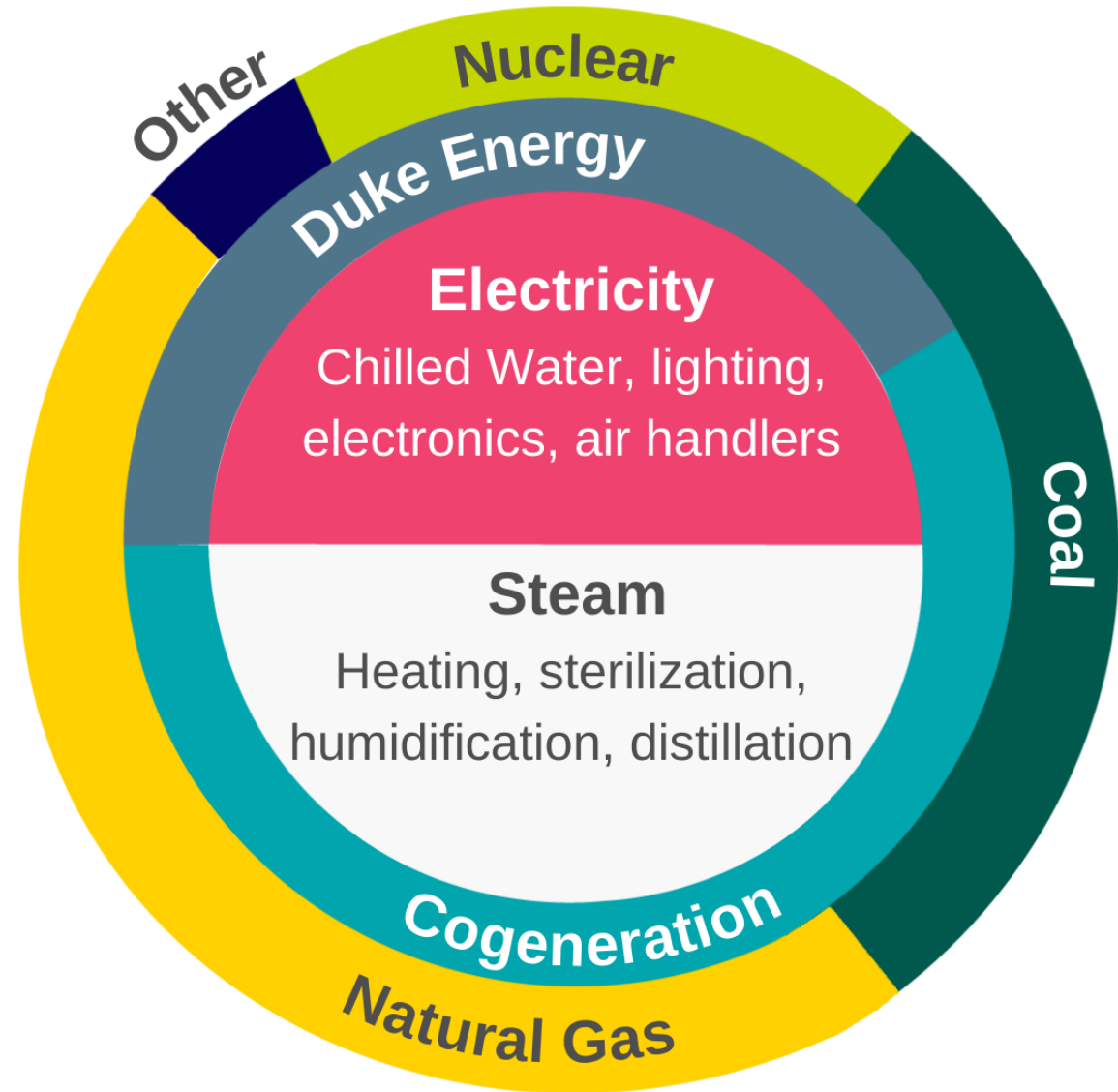
Powering Carolina and UNC Hospital

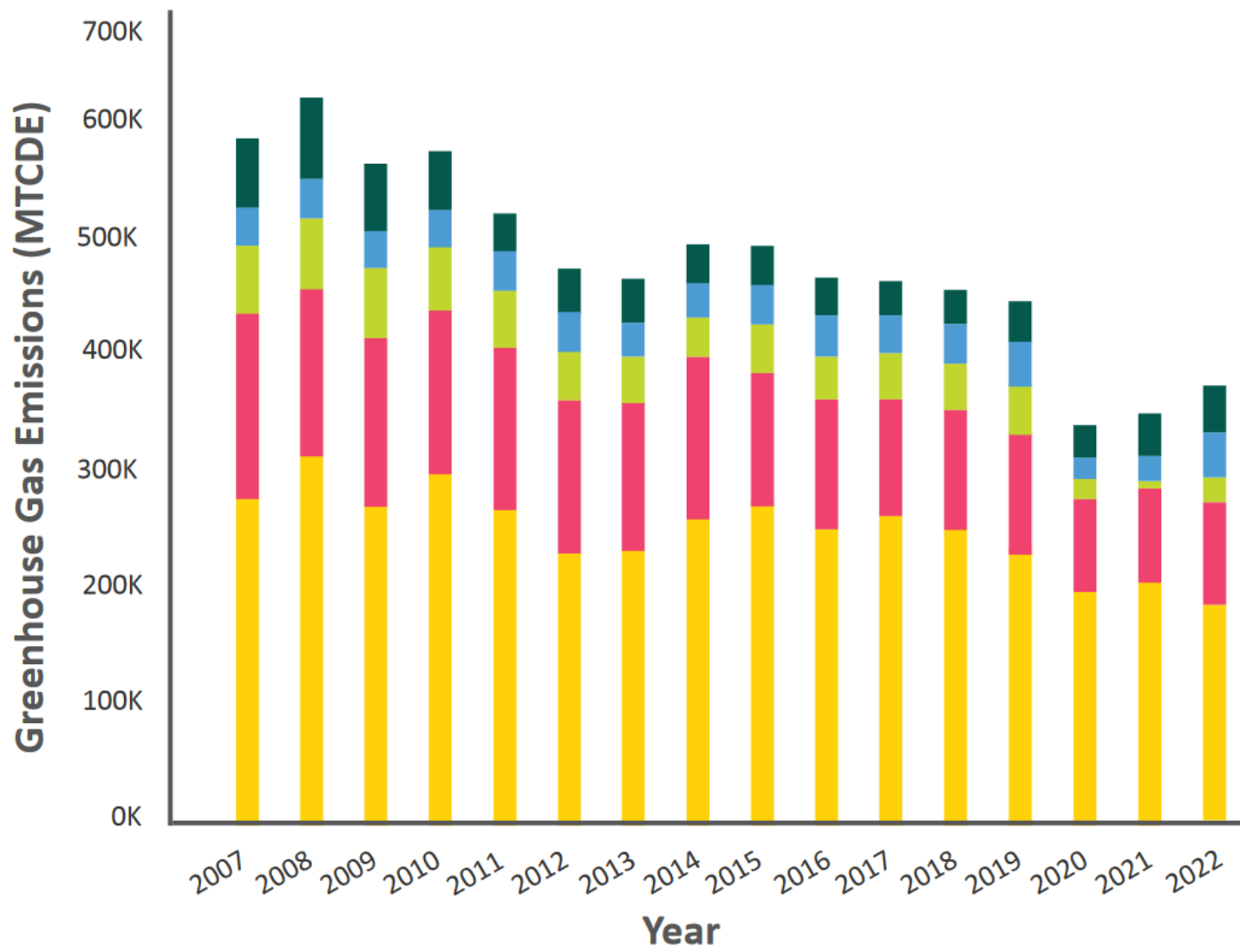
Percentages represented in this nested pie chart vary annually, depending on internal and external factors (e.g. weather, fuel costs and cogeneration electricity production).

Outer circle: Respective fuels

Middle circle: Respective generation

Inner circle: Energy services





Stationary Combustion
Purchased Electricity
Air Travel
Commuting
Other

36%
decrease in
emissions since
2007.

374,794
metric tons of CO2
equivalent in 2022.