

REIMAGINING EAST WEAVER STREET CAPACITY STUDY



Town Council Meeting
June 17, 2025



JANUARY WORK SESSION

- Overview of conceptual images and considerations
- Received direction for capacity analysis:
 - Traffic impacts (all modes)
 - Public Transit
 - Cost Estimates
 - Next Steps
- Other considerations
 - Public Safety/EMS Access
 - Delivery & Solid Waste Collection
 - Engagement
 - Exploration of social district



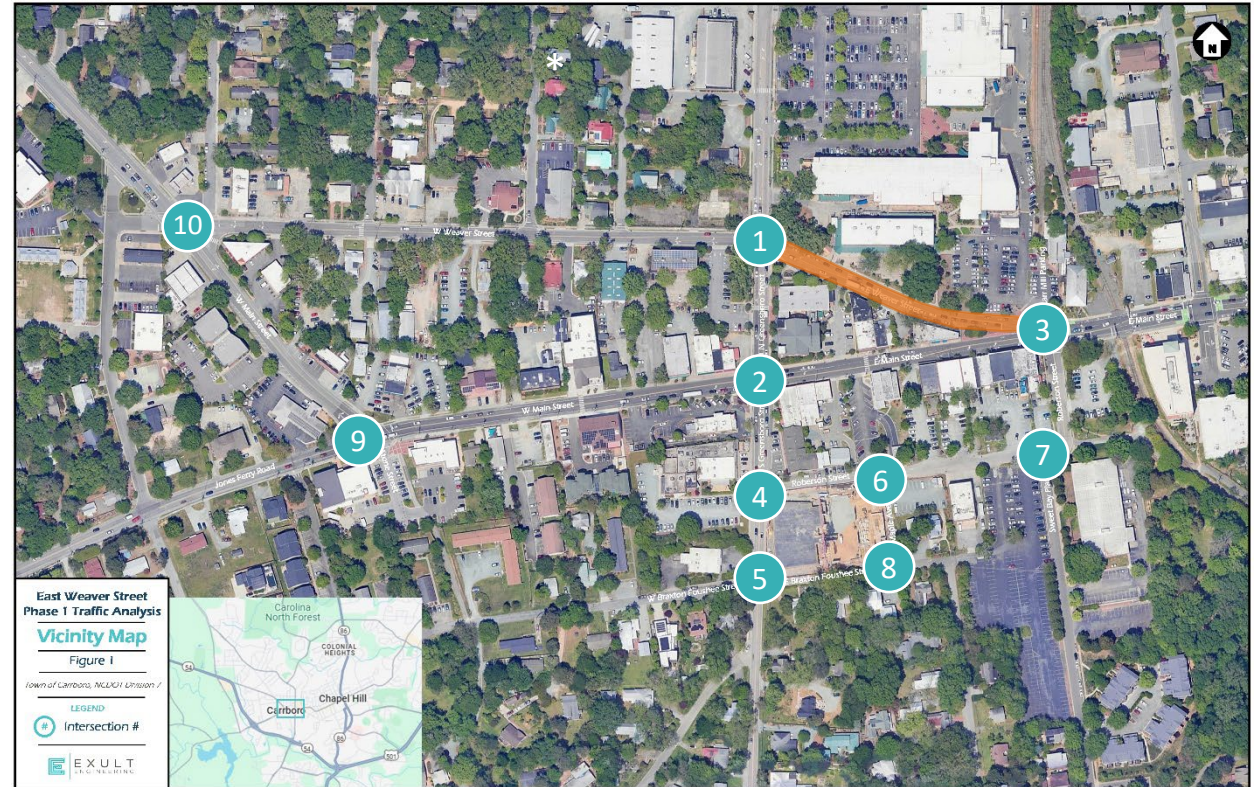
CAPACITY STUDY SCOPE

- Does not factor in considerations for growth, in-fill and redevelopment
- Includes traffic impact analysis for Drakeford
- 3 scenarios:
 - No Build
 - Build
 - Build with Recommended Improvements



SUMMARY FINDINGS | BIKE & PED COUNTS

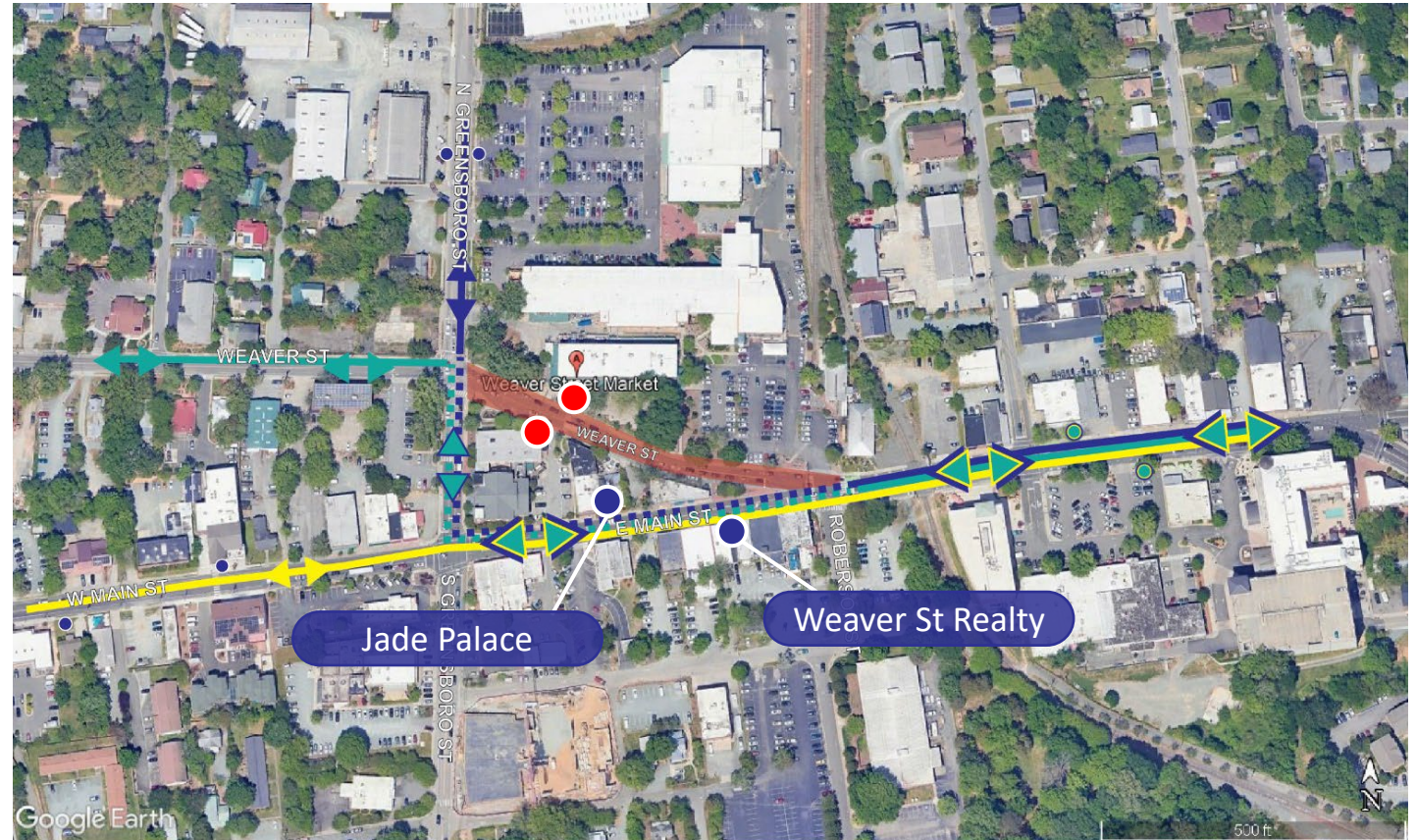
	PEDESTRIANS				BICYCLISTS			
	AM ¹	PM ²	SAT ³	Total	AM ¹	PM ²	SAT ³	Total
1	50	127	223	400	32	35	36	103
2	35	120	154	309	29	40	28	97
3	102	330	626	1058	69	138	95	302
4	32	39	96	167	10	24	10	44
5	18	53	45	116	6	13	6	25
6	16	64	88	168	11	30	14	55
7	36	111	39	186	16	40	13	69
8	5	10	20	35	2	4	0	6
9	14	62	115	191	31	41	19	91
10	13	46	377	436	20	39	36	95



- ¹ AM Peak measured Tuesday, March 25, 7-9am
- ² PM Peak measured Tuesday, March 25, 4-6pm
- ³ SAT Peak measured Saturday, March 22, 11am-1pm

SUMMARY FINDINGS | TRANSIT SERVICE

- E Weaver Street stops moved to E Main Street
- F & CW Route share with J Route and Regional 405 (Durham-Carrboro)
 - 96 buses per weekday
 - 18-19 buses per weekend day
- Rerouting does not take into account impacts to schedule
- Stop bars need to be moved to accommodate 40' buses



TRANSIT ROUTES IN THE STUDY AREA (FUTURE CONDITIONS)

- | | |
|------------|-------------------------|
| — CW Route | - - - Rerouted CW Route |
| — F Route | - - - Rerouted F Route |
| — J Route | ● Bus Stop Closure |
| ● Bus Stop | ■ Weaver Street Closure |

SUMMARY FINDINGS | VEHICLE TRAVEL TIMES

ANTICIPATED VEHICLE TRAVEL TIME CHANGES

Time it takes for vehicle to move from back of the line through intersection

-  Travel Times Improve (overall)
-  Travel Times Diminish (overall)
-  Travel Times Maintained (overall)

Affected by several factors:

- Signal timing
- Geometry
- Volume of traffic

* does not speak to changes in queueing lengths



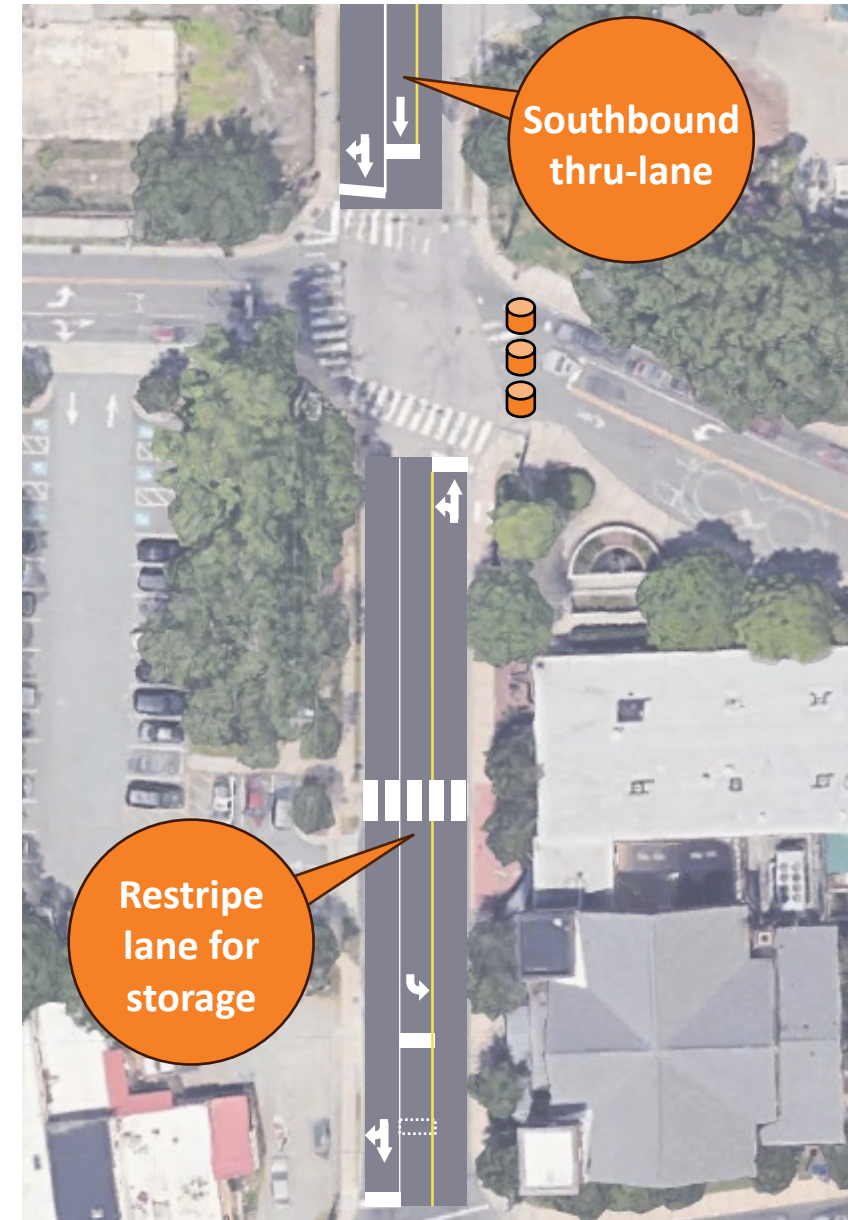
No Build



Build



Build with Improvements



POTENTIAL CHANGES TO N GREENSBORO ST

No Build

Build

Build with Improvements



POTENTIAL CHANGES TO S GREENSBORO ST

No Build



Build / Build with Improvements



POTENTIAL CHANGES TO E MAIN STREET

QUEUEING

Lines show max queueing
(length of line of cars waiting
for signal to change)

Potential to impact cyclists

N Greensboro Street

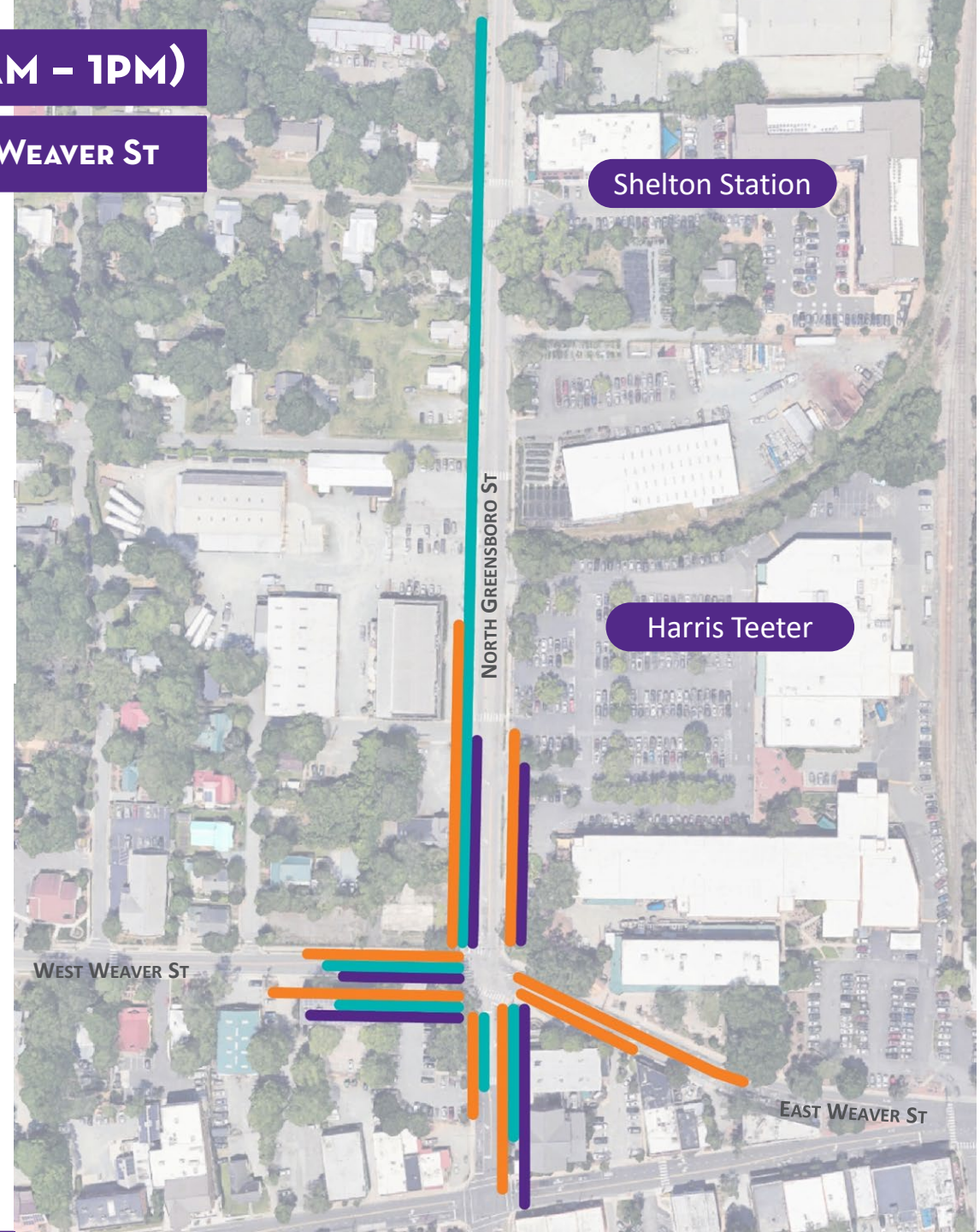
- Reduced delays and decreased queueing north- and eastbound
- Excessive queueing for southbound traffic

SATURDAY (11 AM – 1PM)

N GREENSBORO ST & WEAVER ST

Scenarios

- No Build
- Build
- Build with Improvements



QUEUEING

Lines show max queueing
(length of line of cars waiting
for signal to change)

Potential to impact cyclists

S Greensboro Street

- Queueing past Drakeford Library Complex

Main Street

- Queueing from CommunityWorx to Greensboro Street
- Queue fills block between Greensboro and Roberson

SATURDAY (11 AM – 1PM)

S GREENSBORO ST & MAIN ST



QUEUEING

Lines show max queueing
(length of line of cars waiting
for signal to change)

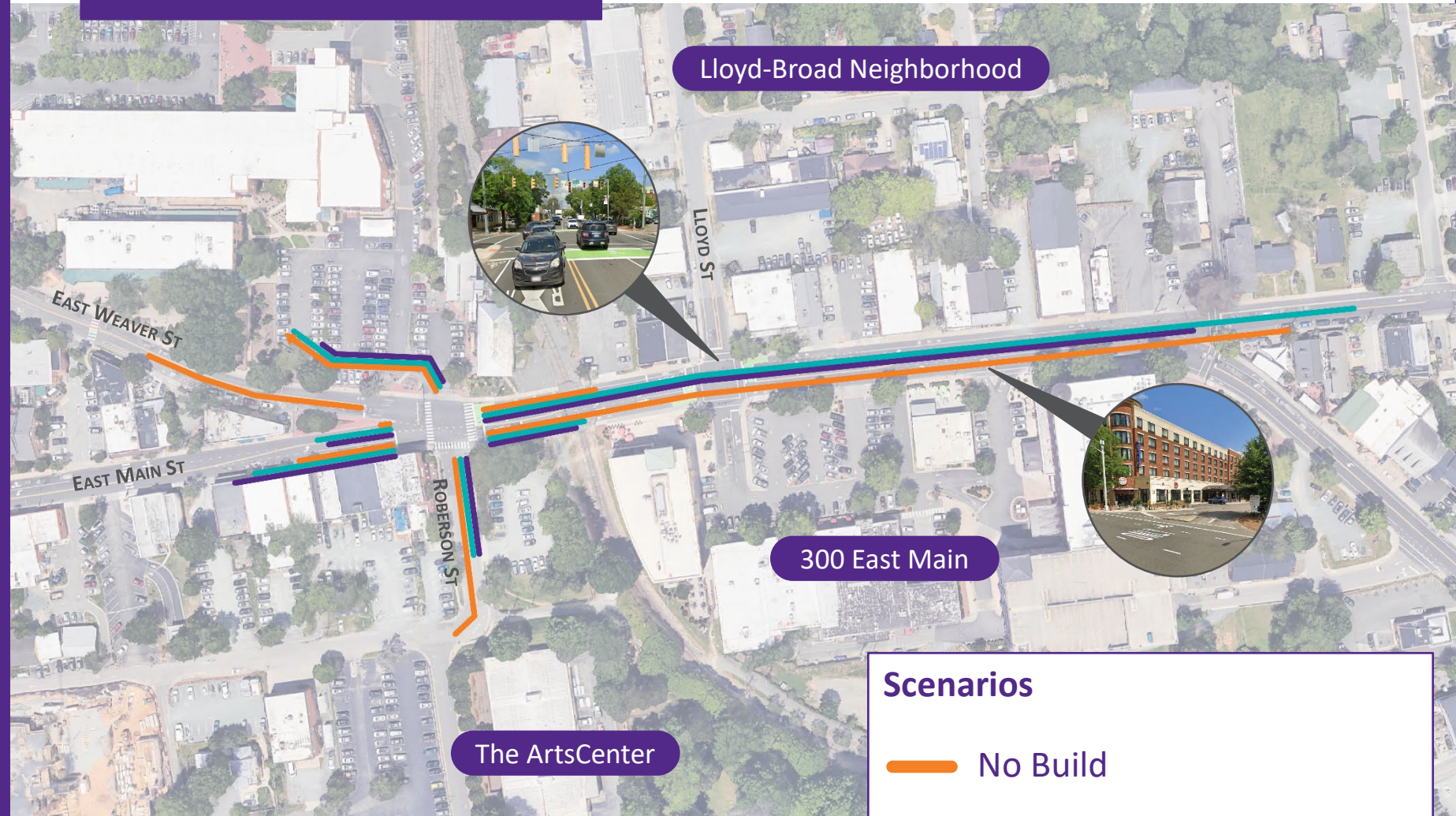
Potential to impact cyclists

E Main Street

- Queueing from Roberson beyond Lloyd Street
- Circulation at 300 East Main Complex

TUESDAY PM (4 PM – 6 PM)

MAIN ST & ROBERSON ST



Scenarios

- No Build
- Build
- Build with Improvements

ACCESS CONSIDERATIONS

Public Safety/EMS
Bikes Entering & Exiting

Private Parking
Towing

Public services
Deliveries
Street Parking

TOWN OF CARBORO

MINIMUM CHANGES FOR IMPLEMENTATION



Traffic Signals (5)

- Design
- Construction

Barriers to E Weaver

- Permanent or retractable

Curb Realignment

- Entrance to Carr Mill

Lane Allocation

- Mill/Stripe/Resurface
- Move stop bar back 25'

Signage

- Inform pedestrians, bikes, and cars of changes

NEXT STEPS

Action Items

- Under NCDOT Review
- Travel Time Changes & Queueing
- Delivery & Solid Waste Collection

Summer

- Community Engagement with Key Stakeholders
- Explore Town Code Amendment to Establish Social District

Fall

- Engagement Update
- Report on Costs, Design, and Schedule

