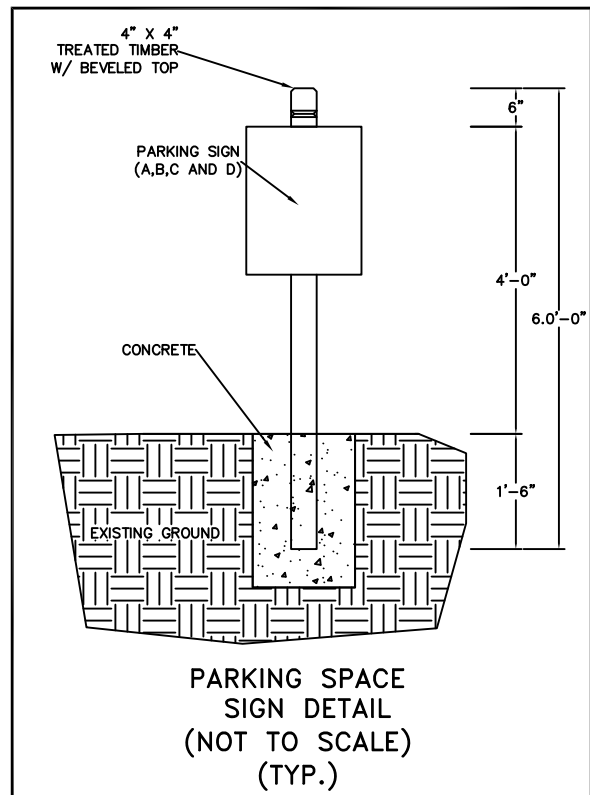
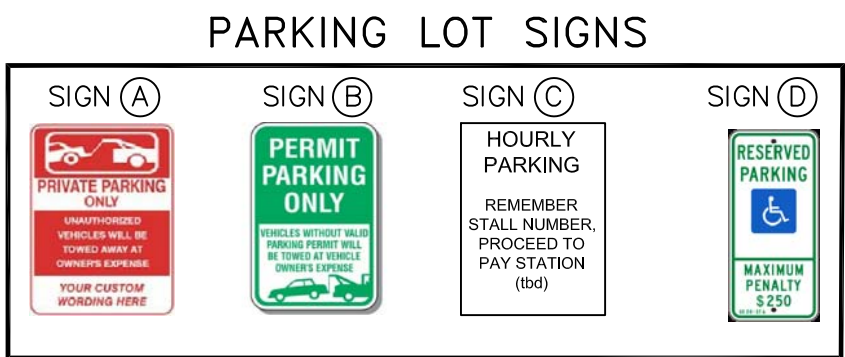
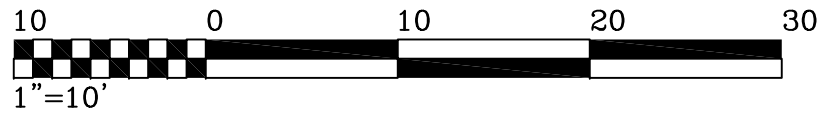


PRELIMINARY PLAT
NOT FOR RECORDING, SALES
OR CONVEYANCE.
THIS DOCUMENT WAS PREPARED FOR
ILLUSTRATION PURPOSES ONLY.
FOR FURTHER INFORMATION:
CONTACT THE ENGINEER/SURVEYOR
AS NOTED.

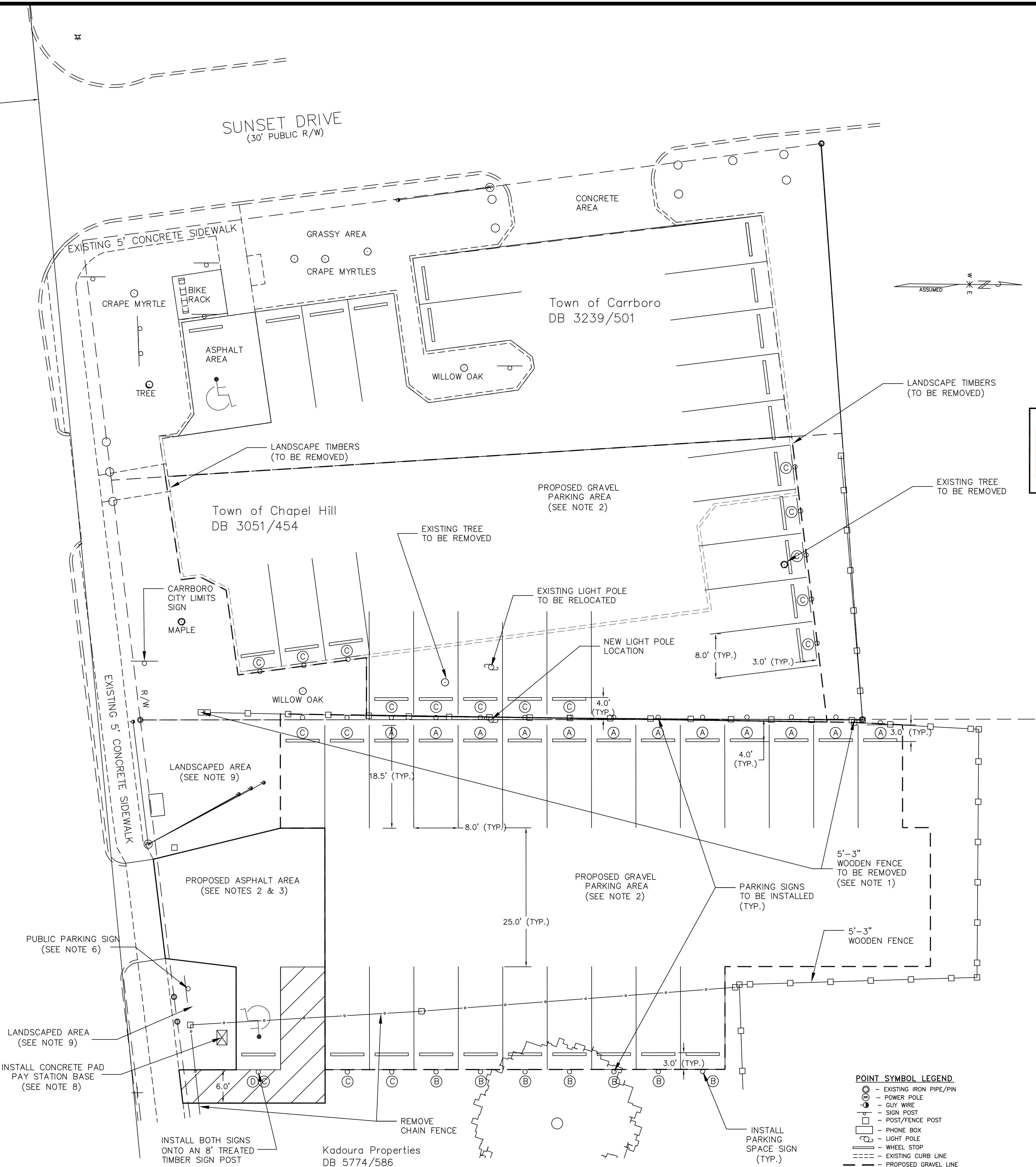


- NOTES:
1. REMOVE APPROXIMATELY 118 LF OF EXISTING 5' WOODEN FENCE. CONTRACTOR SHALL ENSURE THE NEW FENCE END IS SUPPORTED AND TIES INTO THE REMAINING EXISTING FENCE.
 2. INSTALL ABC STONE TO A MINIMUM DEPTH OF 4" OVER THE ENTIRE PARKING AREA (INCLUDING PROPOSED ASPHALT AREA) AS SHOWN AND AS DIRECTED BY THE ENGINEER. PRIOR TO ABC STONE INSTALLATION, CONTRACTOR SHALL SPRAY CONSTRUCTION AREA WITH ROUNDUP OR APPROVED HERBICIDE.
 3. INSTALL 3" OF ASPHALT SURFACE COURSE AT ENTRANCE AREA, ACCESSABILITY PARKING SPACES AND WALKWAY AS SHOWN. CONTRACTOR IS RESPONSIBLE FOR ENSURING ACCESSABILITY PARKING AND WALKWAY MEET CURRENT ADA REQUIREMENTS.
 4. INSTALL WHEEL STOPS AT PARKING SPACES AS DIRECTED BY THE ENGINEER.
 5. INSTALL PAVEMENT MARKINGS ON ASPHALT AREA TO DESIGNATE ACCESSIBLE PARKING AND WALKWAY AS DIRECTED BY THE ENGINEER.
 6. INSTALL PUBLIC PARKING LOT SIGN AS DIRECTED BY THE ENGINEER. SIGN WILL BE SUPPLIED BY TOCH PARKING SERVICES.
 7. INSTALL PARKING SIGNS AT EACH PARKING SPACE AS SHOWN AND DIRECTED BY THE ENGINEER.
 8. INSTALL CONCRETE PAD FOR PLACEMENT OF PAY STATION METER BASE AS DIRECTED BY THE ENGINEER. CONTACT BRENDA JONES, PARKING SUPERINTENDENT, PARKING SERVICES (919)968-2835 FOR CONCRETE PAD THICKNESS AND DIMENSIONS.
 9. REMOVE APPROXIMATELY 6" OF EXISTING SOIL FROM THE LANDSCAPED AREAS AND REPLACE WITH 6" OF TOPSOIL AS DIRECTED BY THE ENGINEER.
 10. CONTRACTOR SHALL BE RESPONSIBLE FOR VERIFYING THE DEPTH OF ALL EXISTING UTILITIES WHICH MAY BE ENCOUNTERED DURING CONSTRUCTION. THE CONTRACTOR SHALL HAVE NO CLAIMS FOR DELAY OR EXTRA COMPENSATION AS A RESULT OF CONFLICTS WITH SAID UTILITIES.

- POINT SYMBOL LEGEND
- EXISTING IRON PIPE/PIN
 - POWER POLE
 - GUY WIRE
 - SIGN POST
 - POST/FENCE POST
 - PHONE BOX
 - LIGHT POLE
 - WHEEL STOP
 - EXISTING CURB LINE
 - PROPOSED GRAVEL LINE
 - PROPOSED ASPHALT LINE
 - EXISTING SIDEWALK LINE
 - PARKING LOT SIGN DESIGNATION
 - BOLLARD
 - FIRE HYDRANT



WEST ROSEMARY STREET
(60' PUBLIC R/W)



Town of
Chapel Hill

ENGINEERING AND DESIGN SERVICES



No.	Revision/Issue	Date

TOWN OF CHAPEL HILL
PUBLIC WORKS DEPARTMENT
ENGINEERING AND DESIGN SERVICES DIVISION
6850 MILLHOUSE RD
CHAPEL HILL, NC 27516

Project Name and Address
PROPOSED PARKING IMPROVEMENTS
CARRBORO-CHAPEL HILL PARKING LOT
ROSEMARY ST
Chapel Hill, NC

Project Corrhilladditionfinal.dwg	Sheet 1
Date 09/12/16	
Scale 1" = 20'	