

Currently four oak trees exist on the project site. These trees are located directly south of the existing 300 East Main parking deck (see Figures 1 and 2 below). These trees were approved to be removed on the previous Butler condominium plan. These trees need to be removed due to the central location of these trees to the site and proximity to the parking deck (which has an approved expansion plan) which serves as the access to the underground parking for the hotel. There are no alternate locations due to site constraints (site access, stormwater control features, Libba Cotton Bikeway/RR).



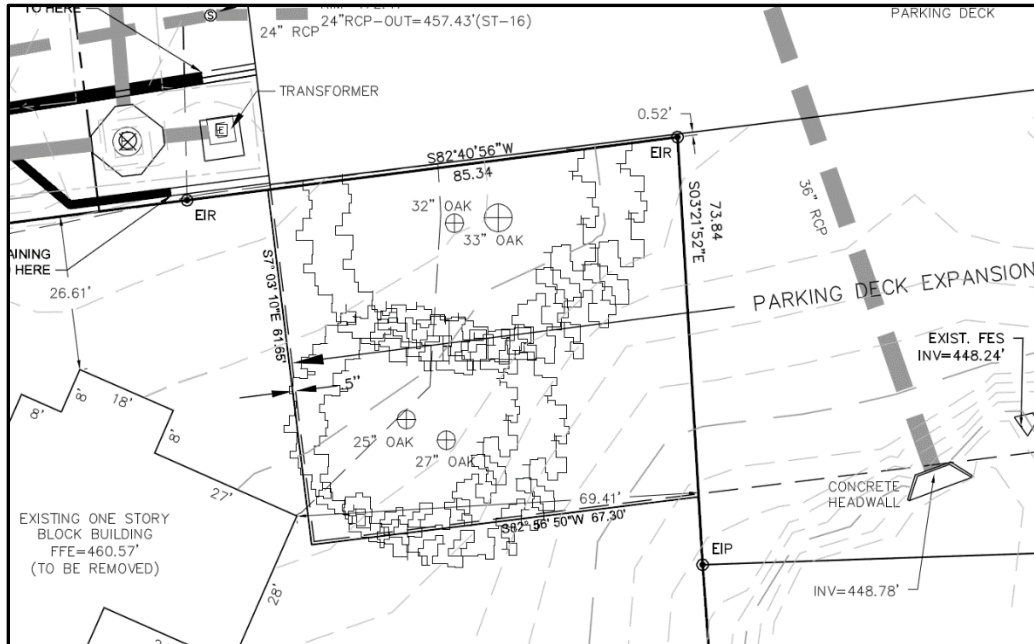


Figure 2 - Existing Conditions

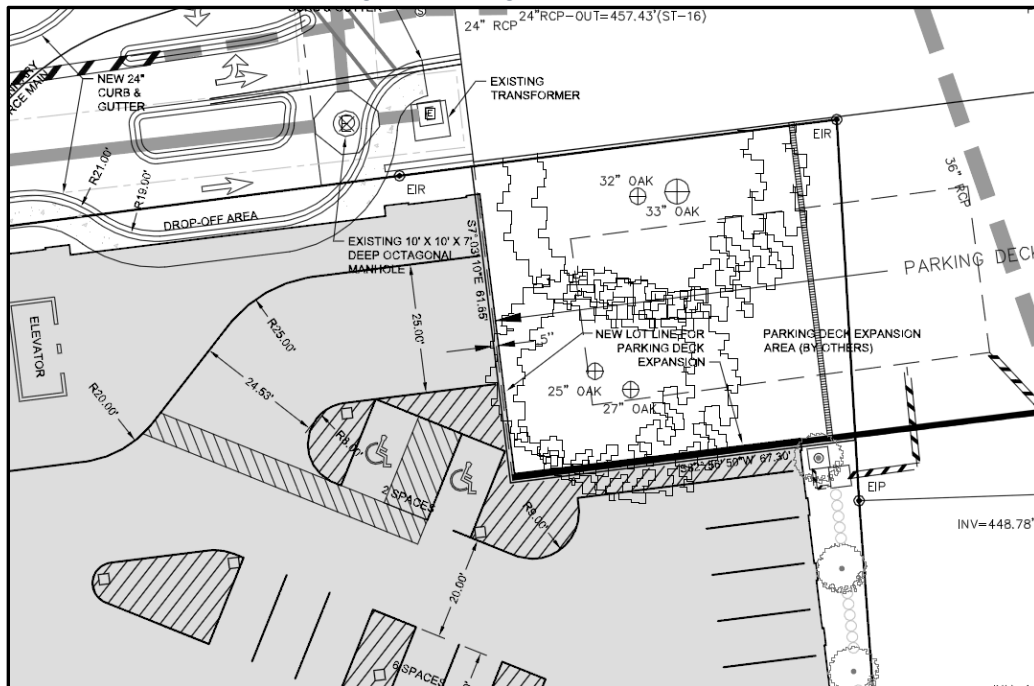


Figure 3-Proposed entrance to underground hotel parking from parking deck expansion

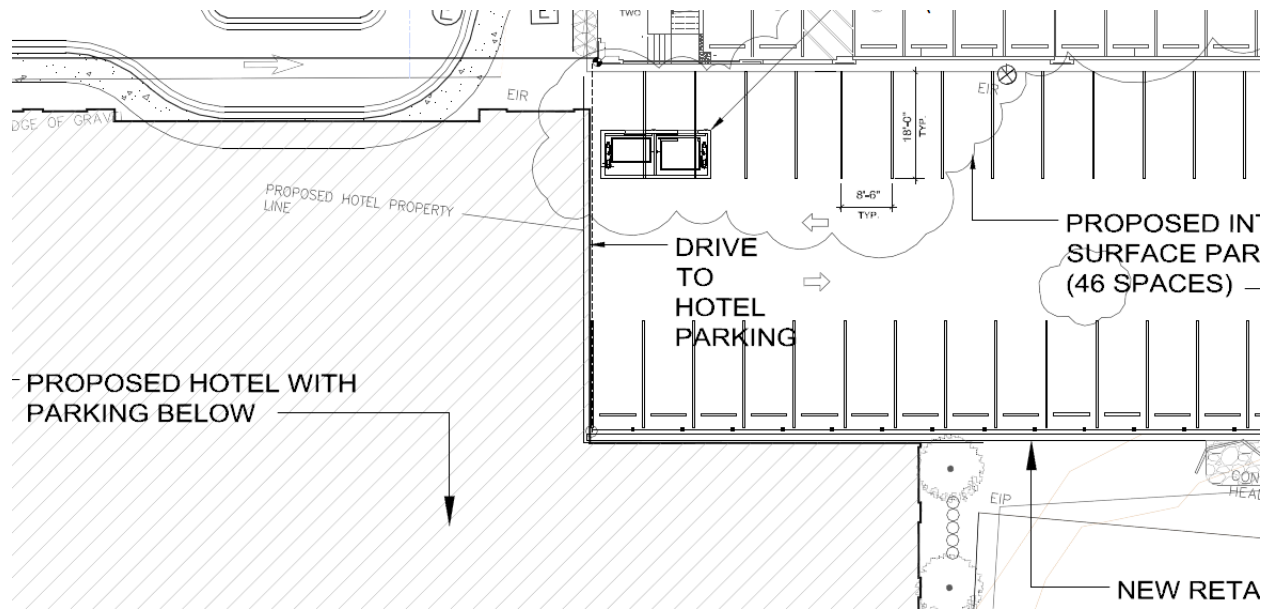


Figure 2- Plan showing proposed parking deck expansion and access to underground hotel parking