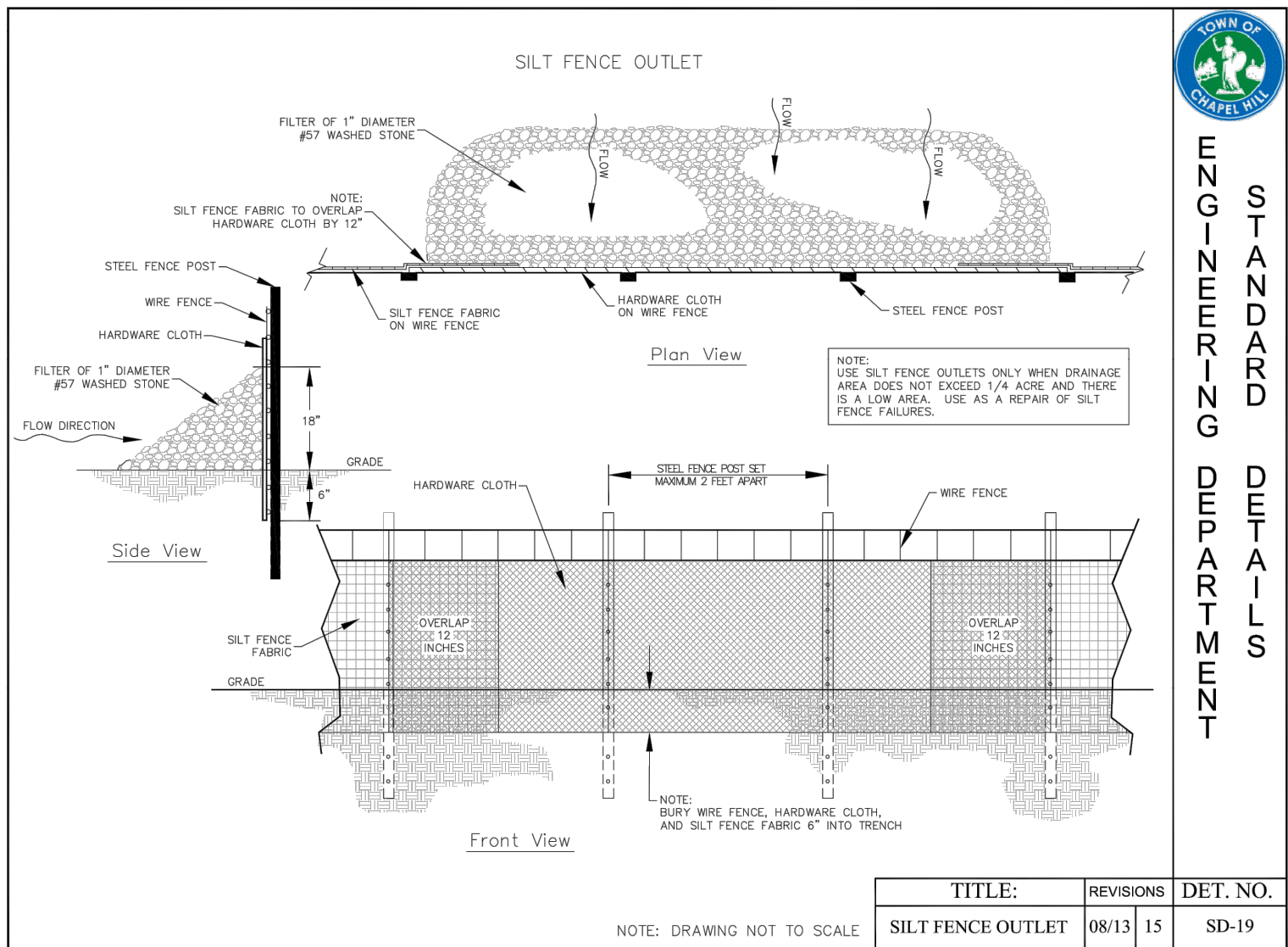


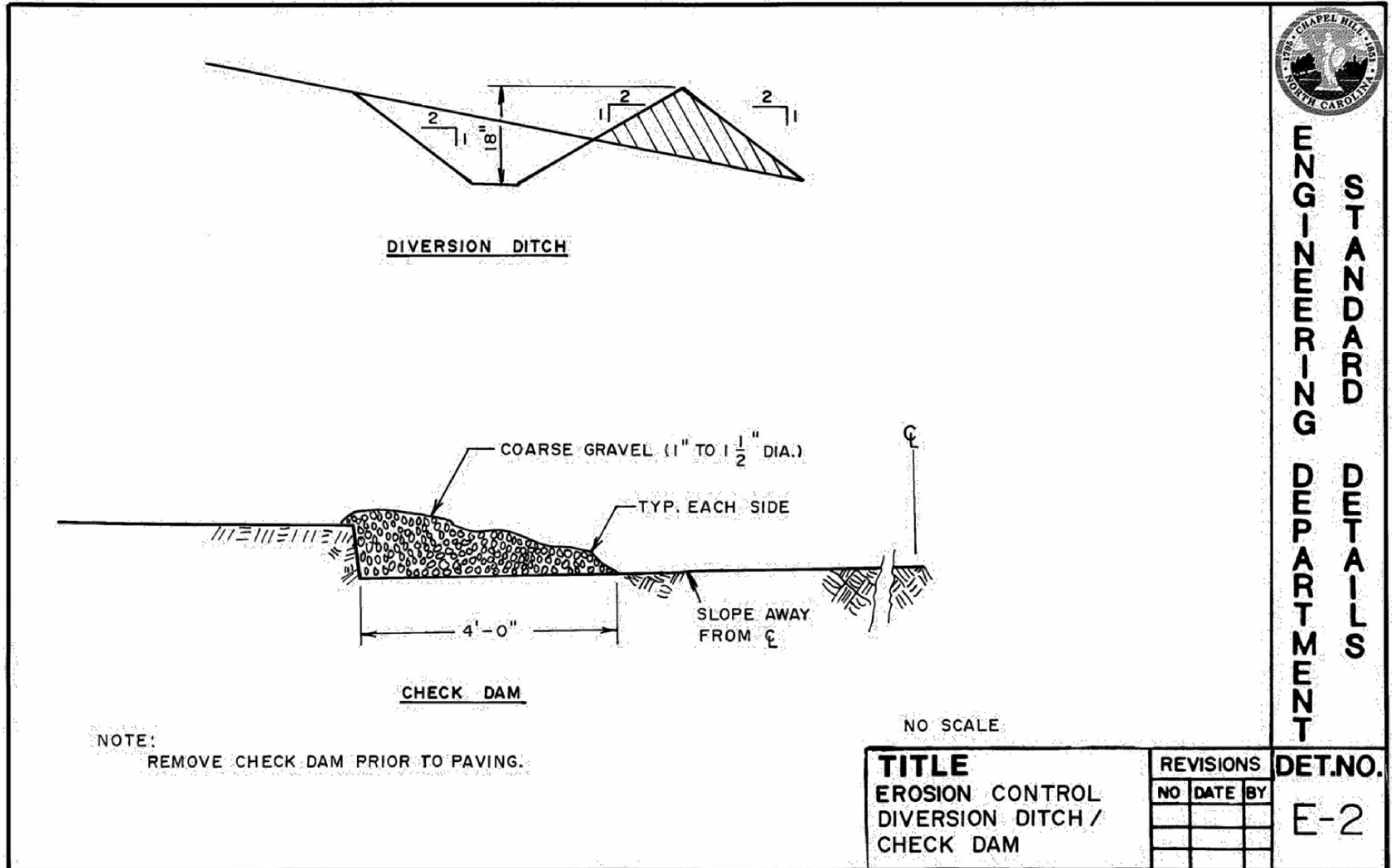
1 CONSTRUCTION ENTRANCE
PLAN

NTS



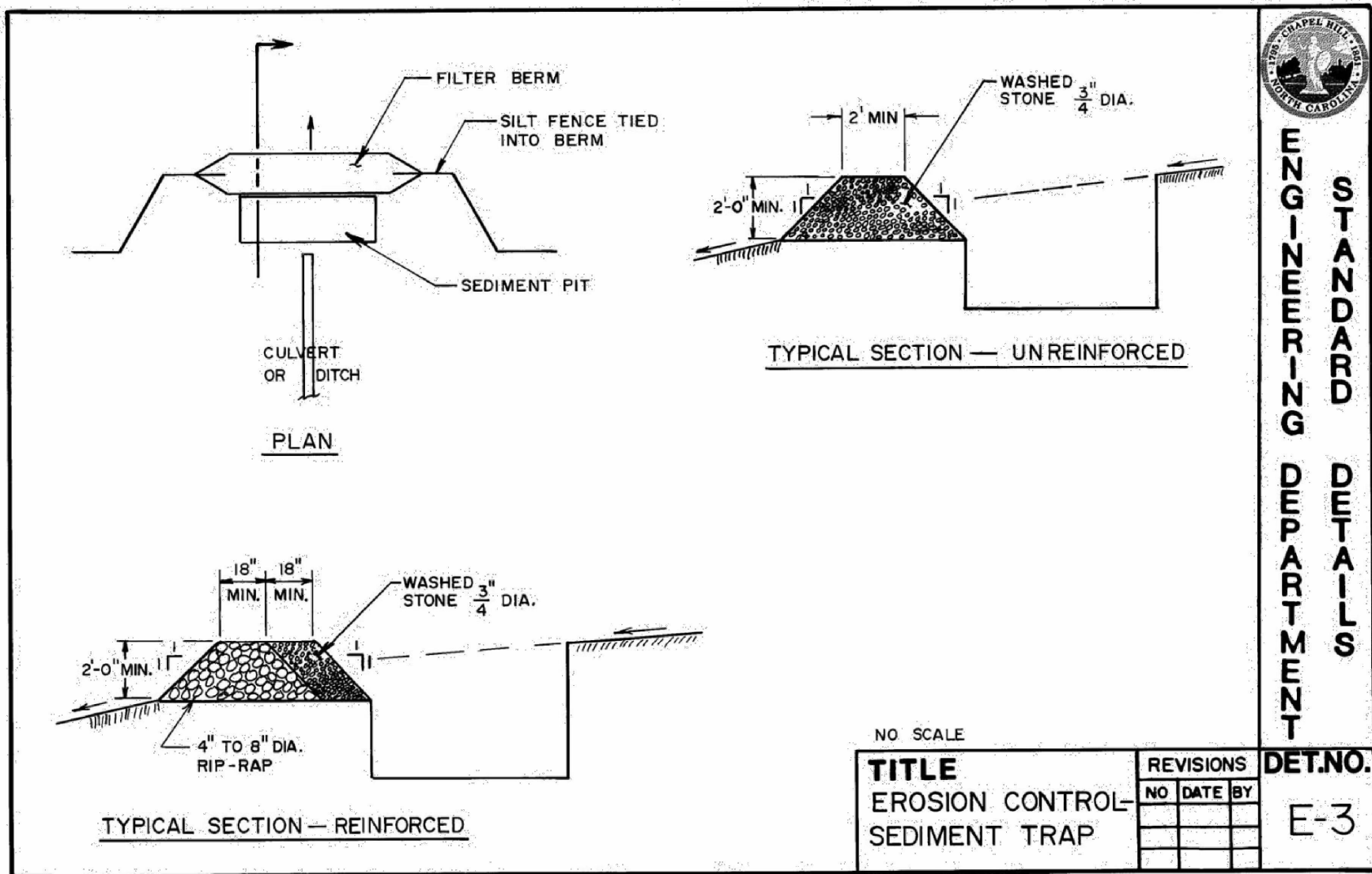
4 SILT FENCE OUTLET
SECTION

NTS



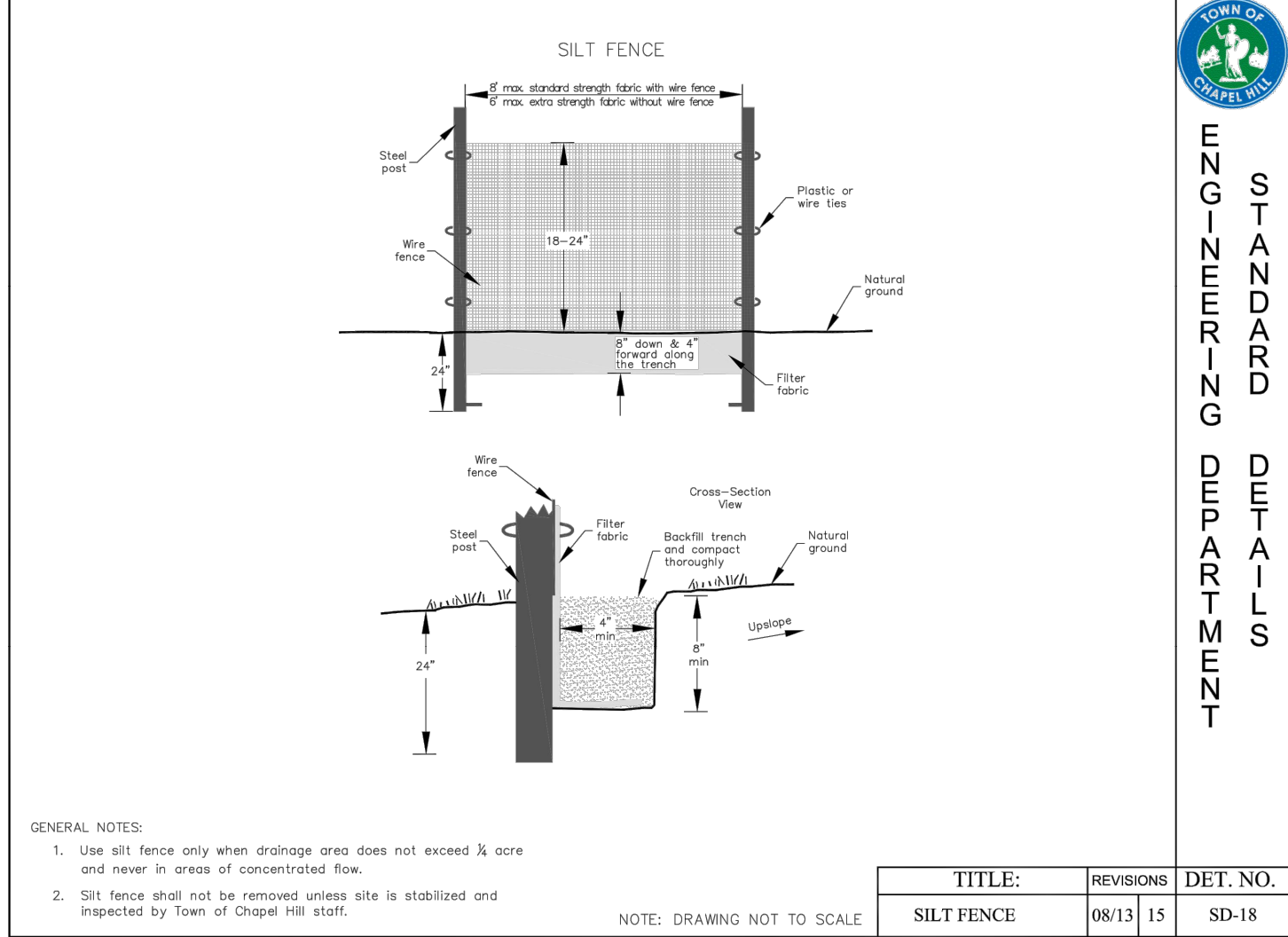
2 DIVERSION DITCH
SECTION

NTS



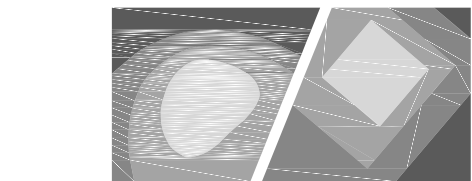
5 SEDIMENT TRAP
SECTION

3/8" = 1'-0"



3 SILT FENCE
SECTION

NTS



STEWART
ENGINEERING

421 FAYETTEVILLE ST., SUITE 400
RALEIGH, NC 27601
T 919.380.8750

FIRM LICENSE # C-1051
www.stewartinc.com
PROJECT # C16146

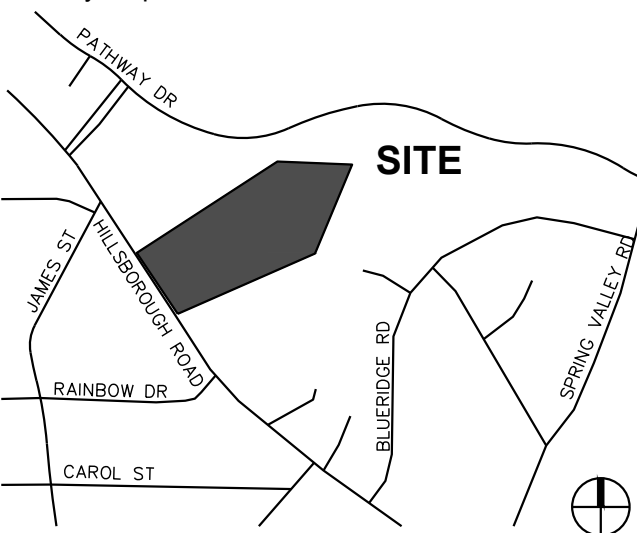
Client:

TOWN OF CARRBORO
301 W. MAIN STREET
CARRBORO, NC 27510
T: (919) 918-7364
F: (919) 918-4475

Project:

MARTIN LUTHER
KING, JR.
PARK

Vicinity map:



Seal:



PRELIMINARY - DO NOT
USE FOR CONSTRUCTION

Issued for:

60% DESIGN
DEVELOPMENT

No. Date Description

SCALE: N.T.S.

Title:

EROSION CONTROL
DETAILS

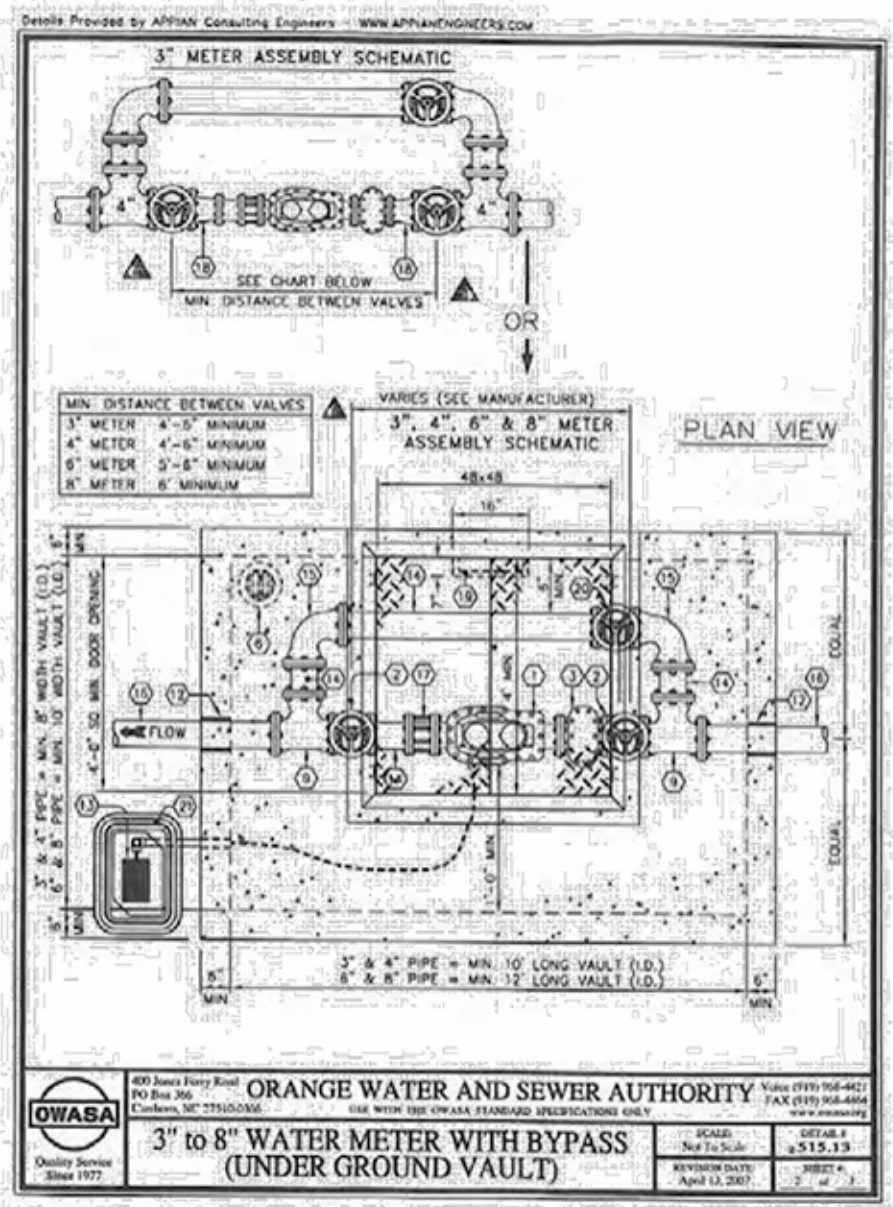
Project number: C16146 Sheet:

Date: 03.03.2017

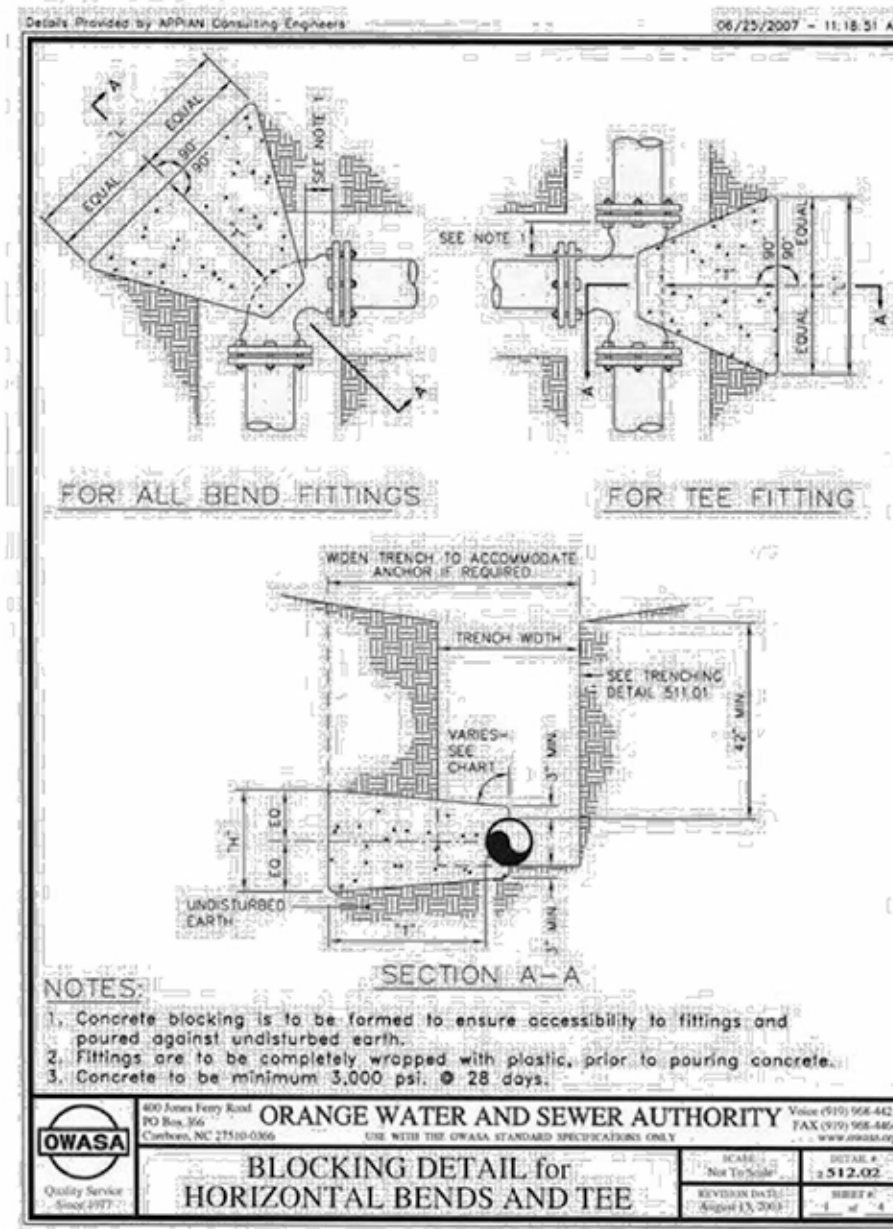
Drawn by: CJJ

Approved by: JLW

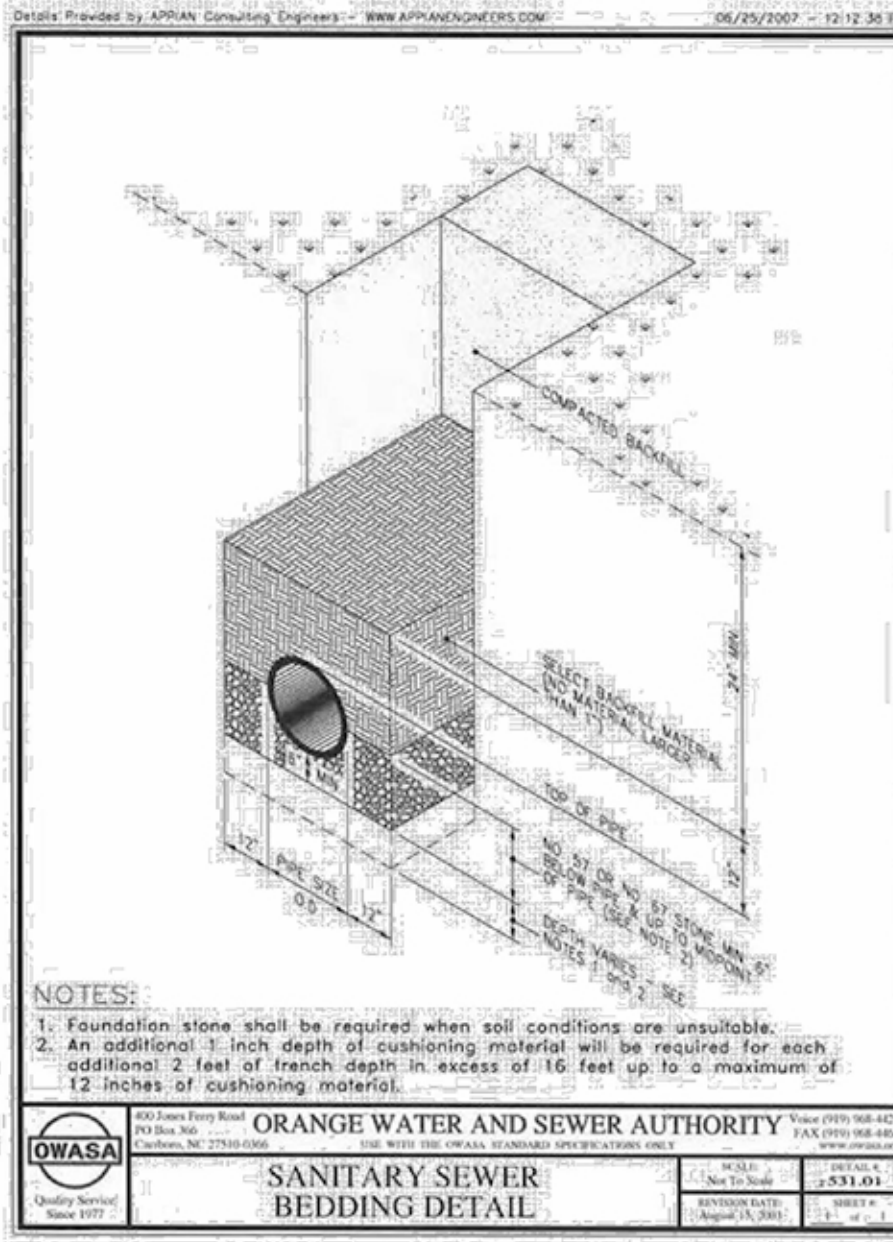
C9.10



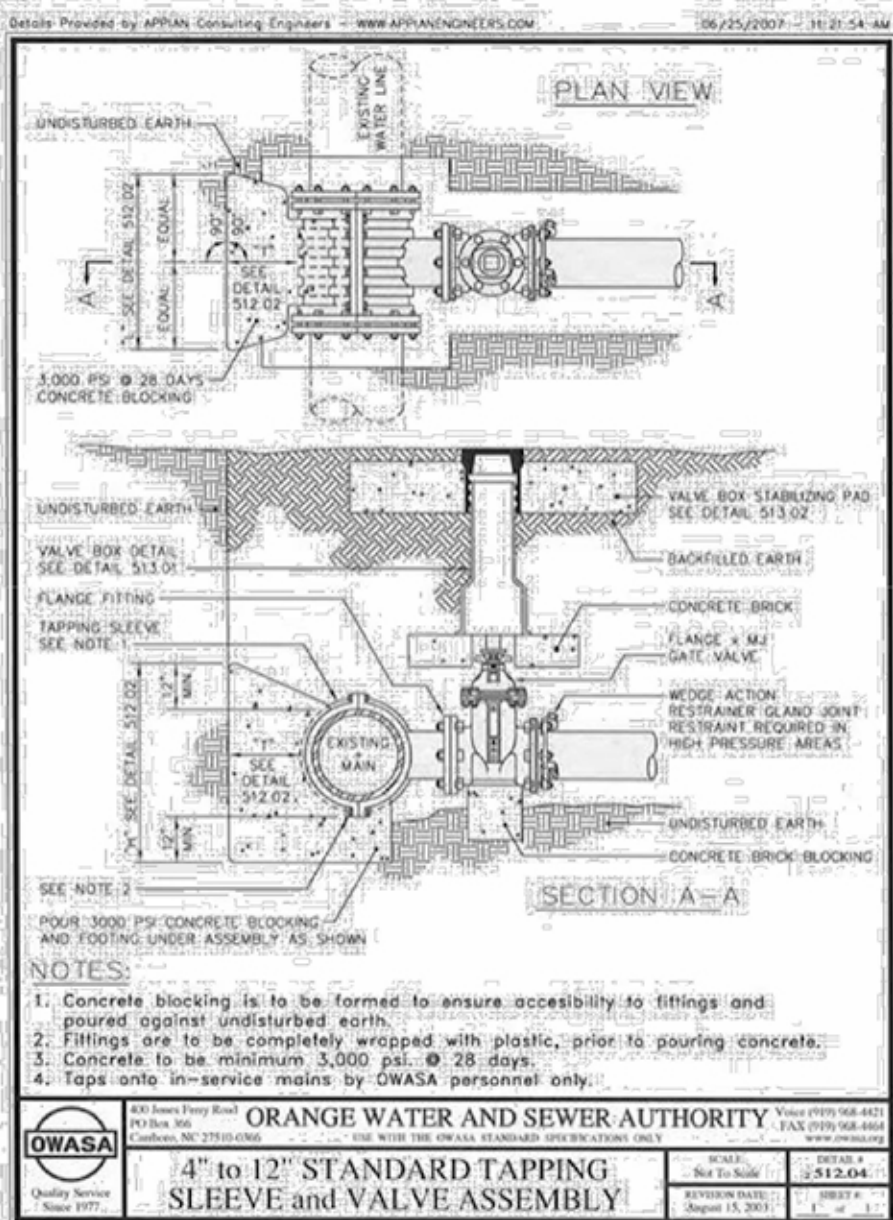
1 WATER METER PLAN NTS



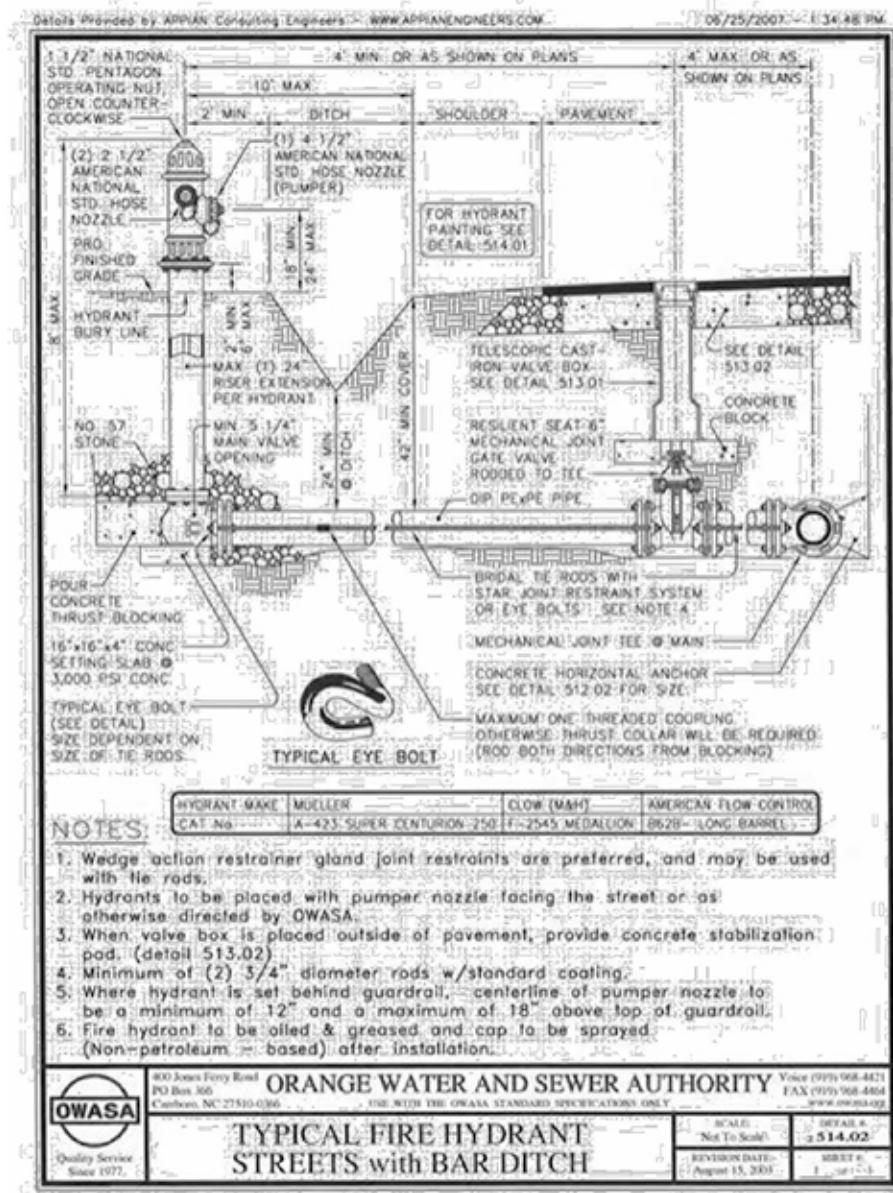
4 BLOCKING PLAN NTS



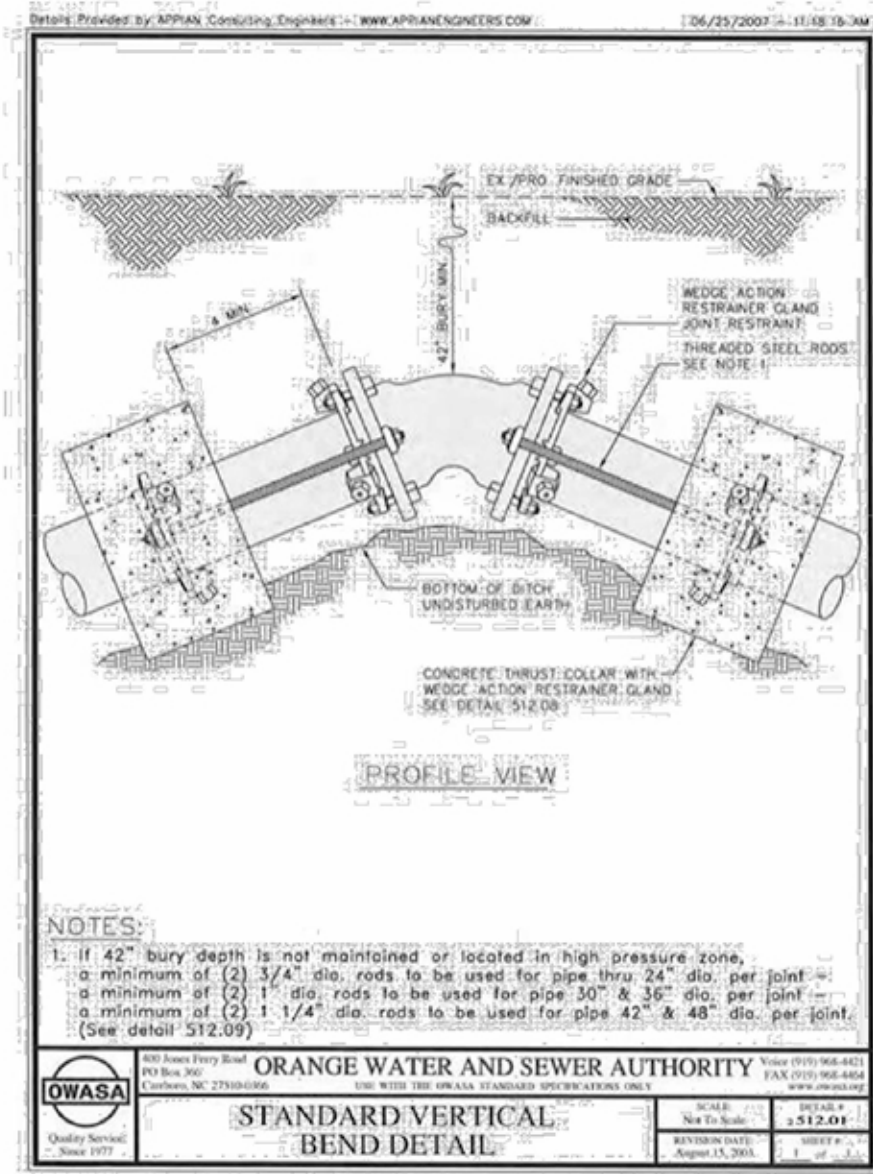
7 SANITARY SEWER BEDDING SECTION NTS



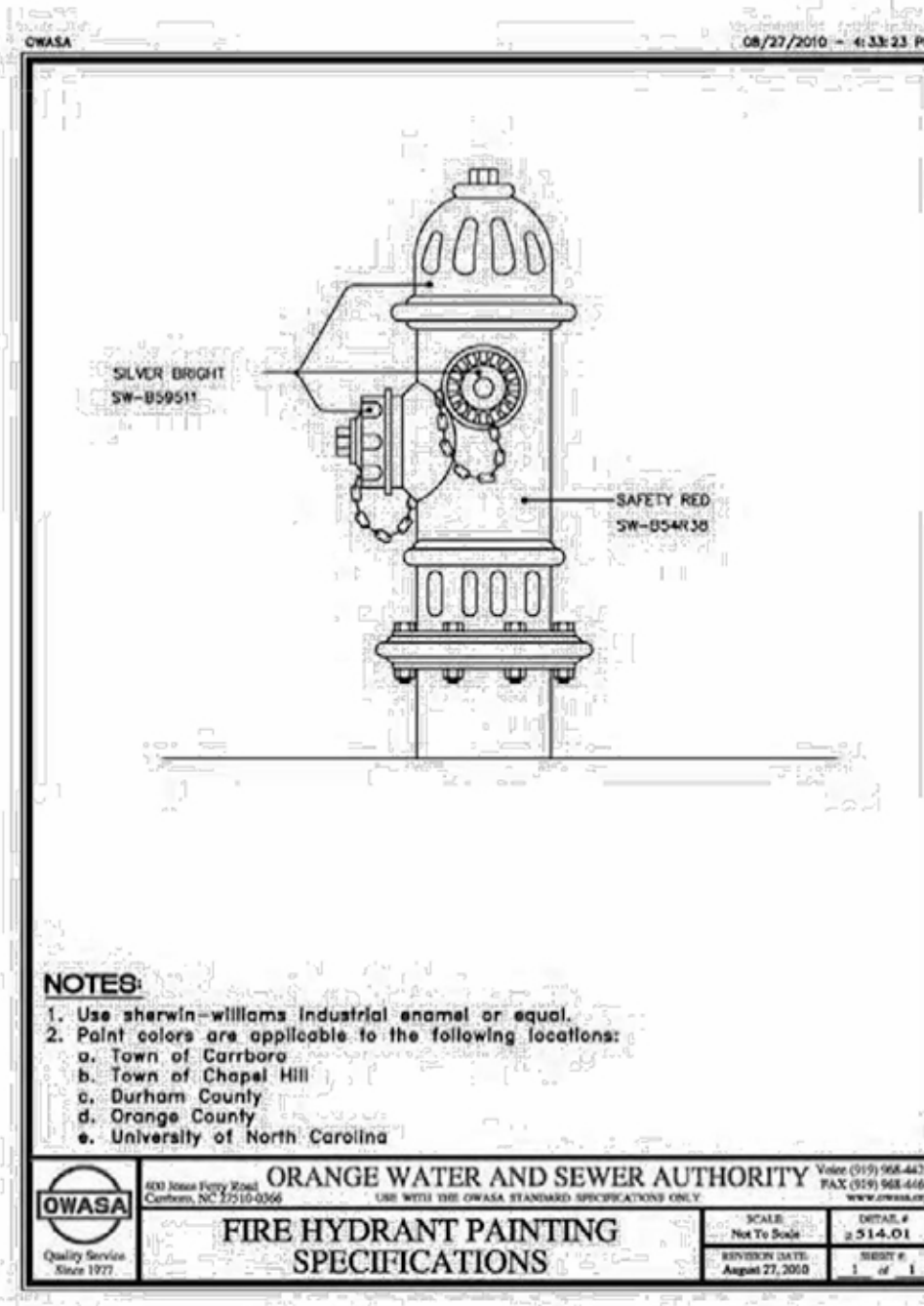
2 TAPPING SLEEVE AND VALVE PLAN NTS



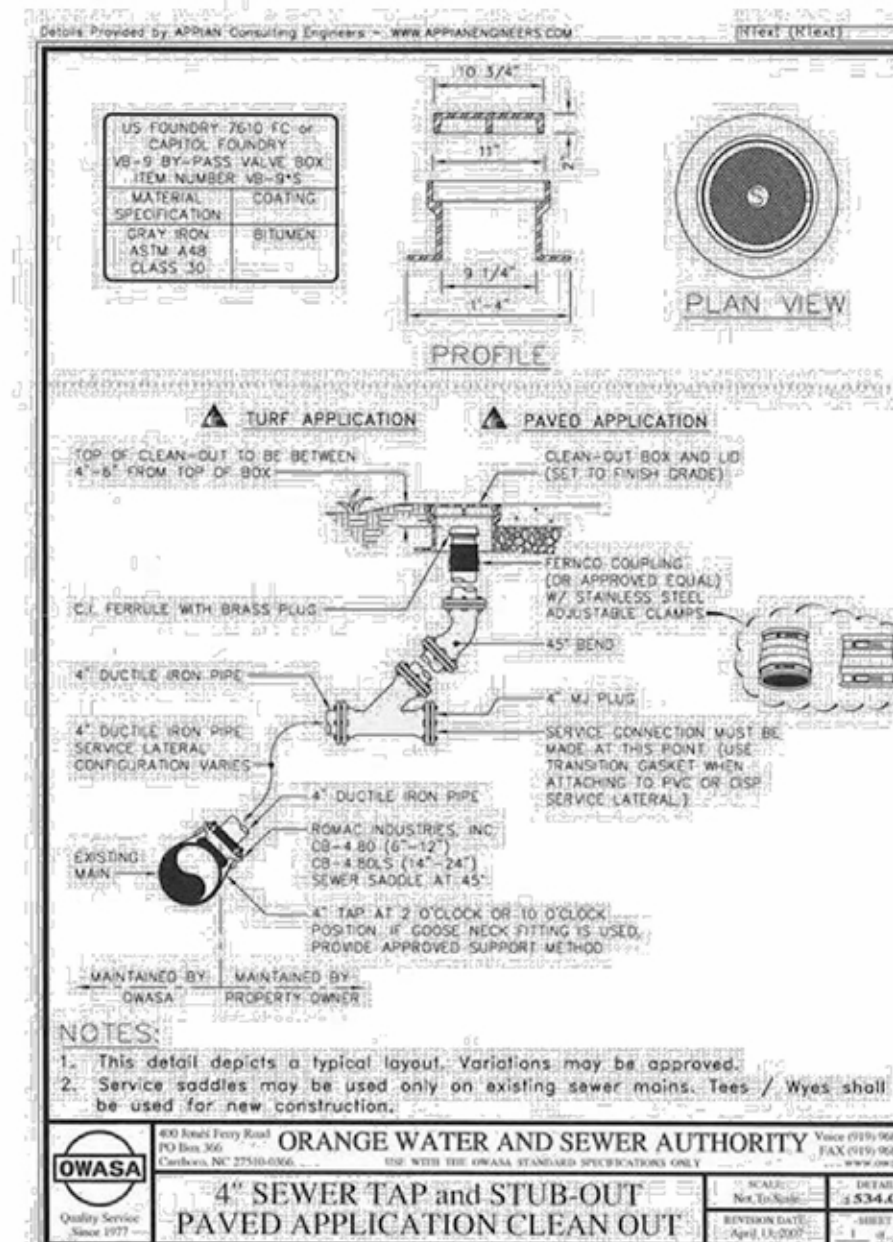
5 FIRE HYDRANT SECTION NTS



3 WATERLINE BEND PLAN NTS



6 FIREHYDRANT PAINT SECTION NTS

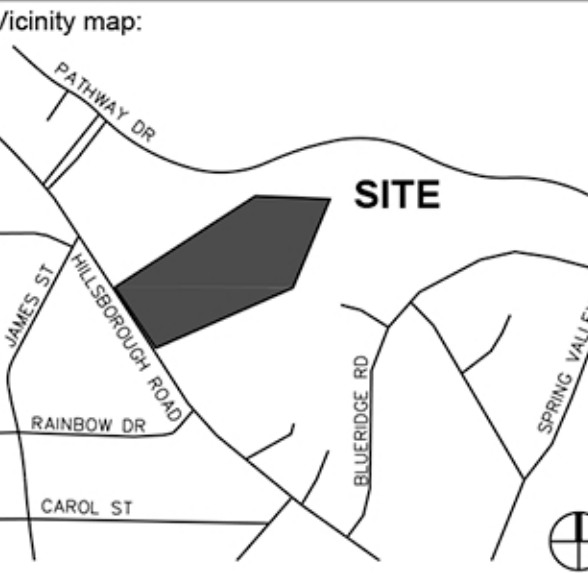


8 CLEANOUT SECTION NTS



Client: TOWN OF CARRBORO
301 W. MAIN STREET
CARRBORO, NC 27510
T: (919) 918-7364
F: (919) 918-4475

Project: MARTIN LUTHER KING, JR. PARK



60% DESIGN DEVELOPMENT

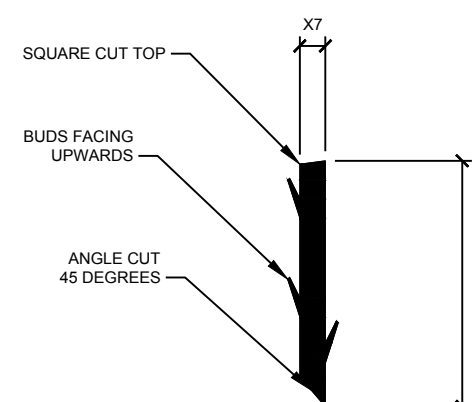
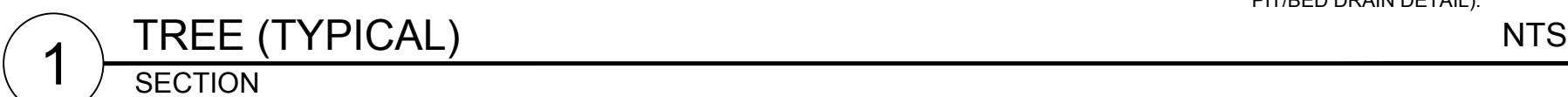
No.	Date	Description

SCALE: N.T.S.

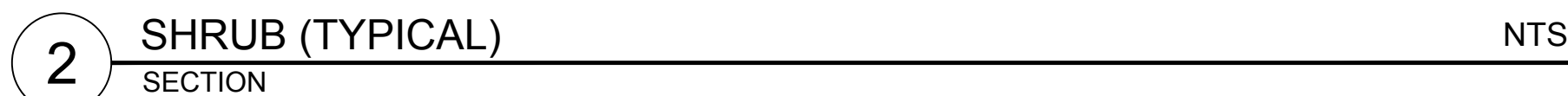
Title:

UTILITY DETAILS

Project number: C16146 Sheet:
Date: 03.03.2017
Drawn by: CJJ
Approved by: JLW
C9.30



4 WETLAND PLANTING (LIVE STAKING) NTS



-
- Diagram illustrating plant spacing and setbacks for various shrub sizes. The setbacks are defined as follows:
- SETBACK FOR 48" - 60" O.C.
 - SETBACK FOR 36" O.C.
 - SETBACK FOR 24" O.C.
 - SETBACK FOR 6" O.C.
- The diagram shows a grid of circles representing plants. The setbacks are measured from the curb or edge of pavement. A note specifies a minimum 18" spacing between different plant types.
- NOTE:**
ALL SHRUBS AND GROUND COVER
MASSES TO USE TRIANGULAR
SPACING EXCEPT WHERE NOTED
REFER TO PLANT LIST FOR
INDIVIDUAL PLANT SPACING 'X'.
- CURB OR EDGE OF PAVEMENT.

8

SHRUB AND GROUND COVER SPACING

NTS

6 PLACEHOLDER SECTION
NTS

1.	DO NOT STAKE TREES EXCEPT WHERE SPECIFIED BY LANDSCAPE ARCHITECT. STAKING IS REQUIRED FOR TREES PLANTED ON SLOPES.	SLOPING TO 2X THE ROOT BALL DIAMETER AT THE DEPTH OF THE ROOT BALL.
2.	WHERE SEVERAL TREES WILL BE PLANTED CLOSE TOGETHER SUCH THAT THEY WILL LIKELY SHARE ROOT SPACE, TILL IN SOIL AMENDMENTS TO A DEPTH OF 4'-6" OVER THE ENTIRE AREA.	9. BEFORE PLANTING, ADD 3-4" OF WELL COMPOSTED LEAVES, RECYCLED YARD WASTE OR OTHER COMPOST AND TILL INTO TOP 6" OF PREPARED SOIL. ADD COMPOST AT 20-35% BY VOLUME TO BACKFILL.
3.	FOR CONTAINER GROWN TREES, USE FINGERS OR SMALL HAND TOOLS TO PULL THE ROOTS OUT OF THE OUTER LAYER OF POTTING SOIL; THEN CUT OR PULL APART ANY ROOTS CIRCLING THE PERIMETER OF THE CONTAINER.	10. PERFORM PERCOLATION TEST FOR EACH TREE PIT TO CONFIRM THAT WATER DRAINS OUT OF THE SOIL. PROVIDE GRAVEL SUMP UNDER FABRIC & VENT PIPE IF DRAINAGE DOES NOT OCCUR WITHIN 24 HOURS. INCLUDE ALL SUMPS IN BASE BID. SHOULD SUMPS NOT BE NECESSARY AFTER PERCOLATION TEST, PROVIDE CHANGE ORDER DUE TO OWNER.
4.	FOR FIELD GROWN TREES, CUT BURPLE, ROPE AND WIRE BASKET AWAY FROM TOP AND SIDES OF ROOT BALL.	11. IF PLANTING HOLES ARE DUG WITH A LARGE AUGER BREAKING DOWN THE SIDES WITH A SHOVEL CAN ELIMINATE GLAZING AND CREATE THE PREFERRED SLOPING SIDE.
5.	THOROUGHLY SOAK THE TREE ROOT BALL AND ADJACENT PREPARED SOIL SEVERAL TIMES DURING THE FIRST MONTH AFTER PLANTING AND REGULARLY THROUGHOUT THE FOLLOWING TWO SUMMERS.	12. TREES SHALL HAVE SINGLE LEADERS. TREES WITH 2 LEADERS WILL BE REJECTED.
6.	THE PLANTING PROCESS IS SIMILAR FOR DECIDUOUS AND EVERGREEN TREES.	13. DO NOT PLACE MULCH IN CONTACT WITH TRUNK.
7.	DO NOT WRAP TRUNK. MARK NORTH SIDE OF TREE IN THE NURSERY AND LOCATE TO THE NORTH IN THE FIELD.	14. PROVIDE GATOR BAGS FOR ALL TREES WHERE IRRIGATION IS NOT PROVIDED.

9 PLANTING NOTES

