

Figure 1: Estimated NC 54 Travelshed for Trips to Chapel Hill

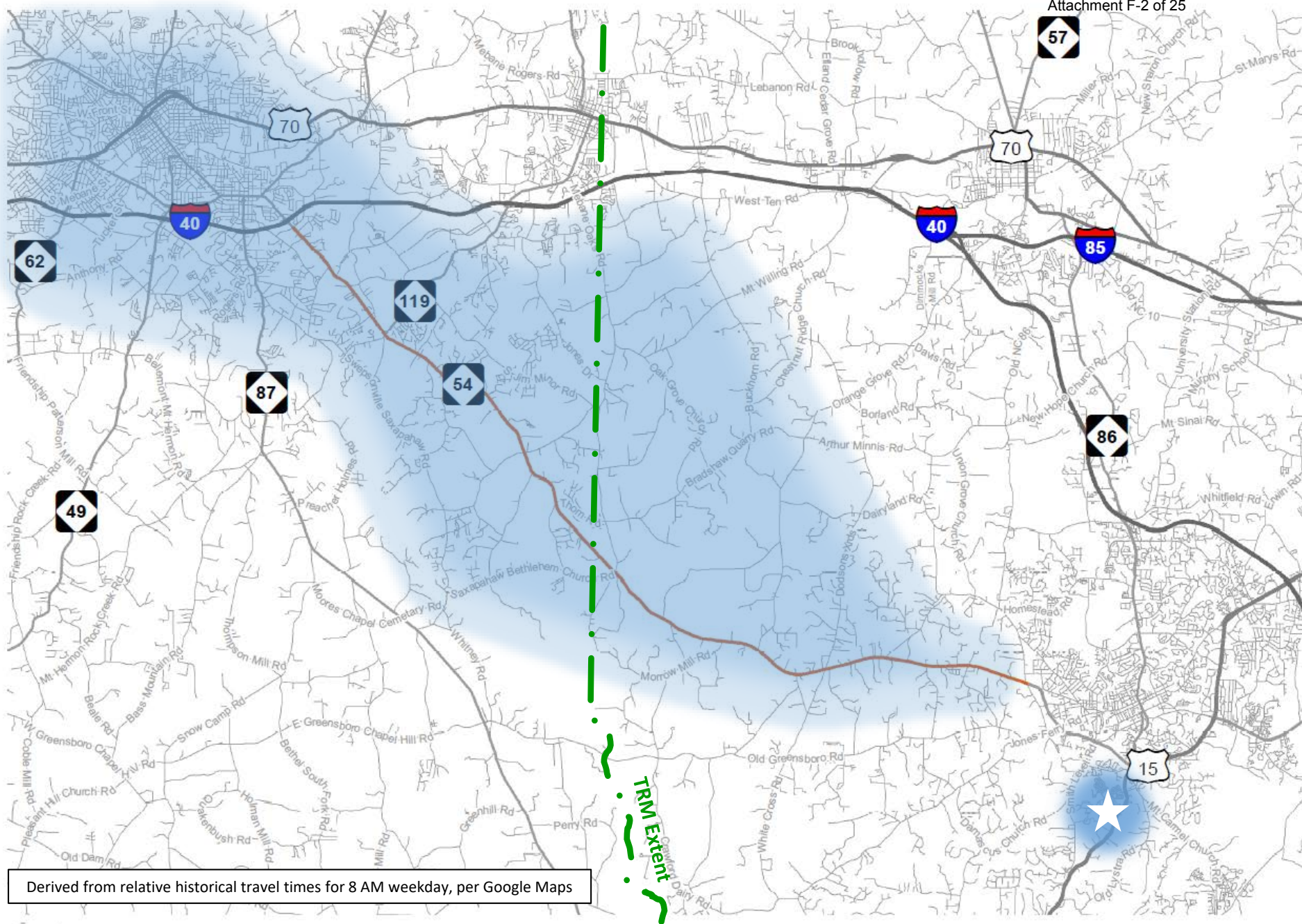


Figure 2: Estimated NC 54 Travelshed for Trips to Southern Village

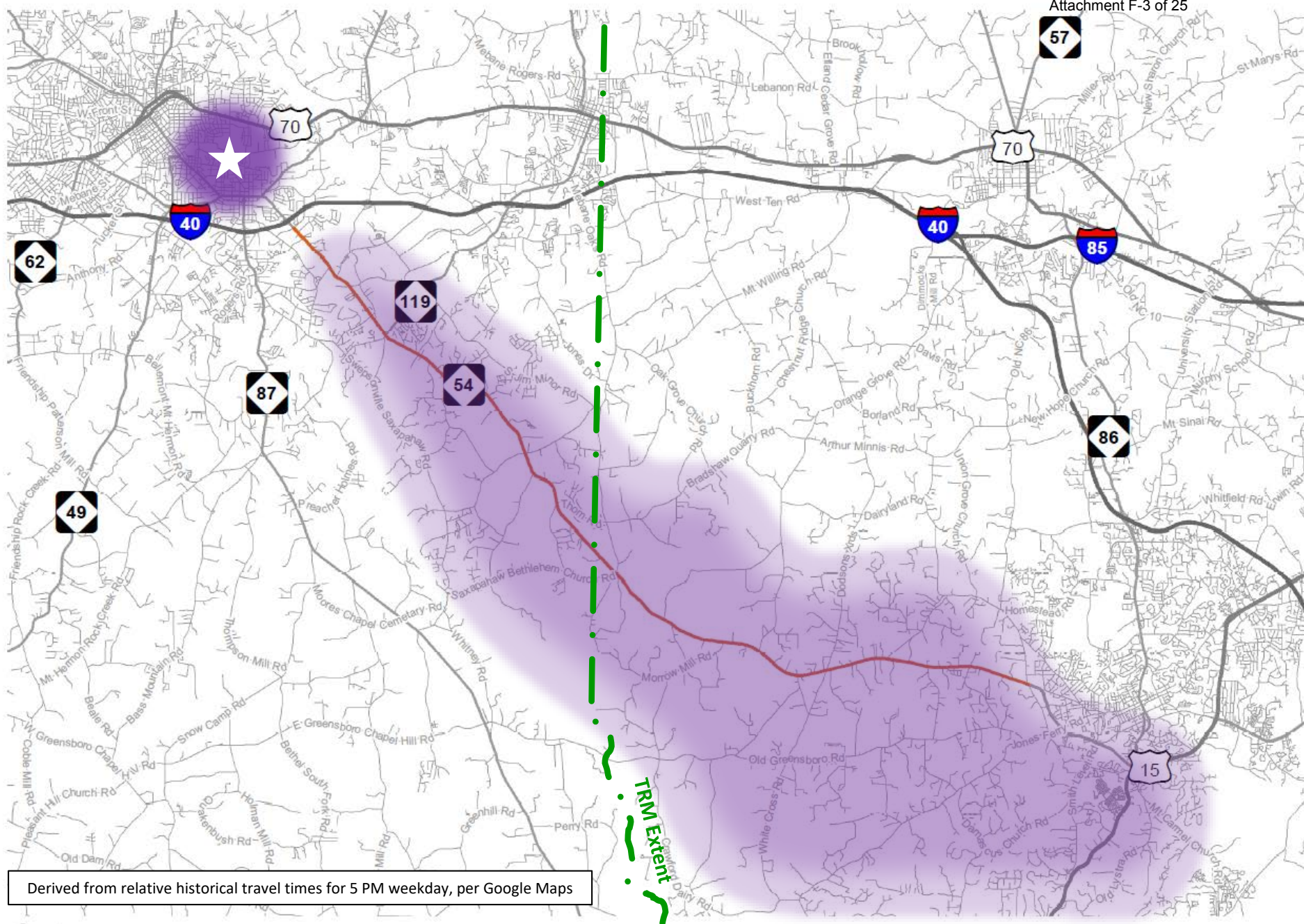


Figure 3: Estimated NC 54 Travelshed for Trips to Burlington



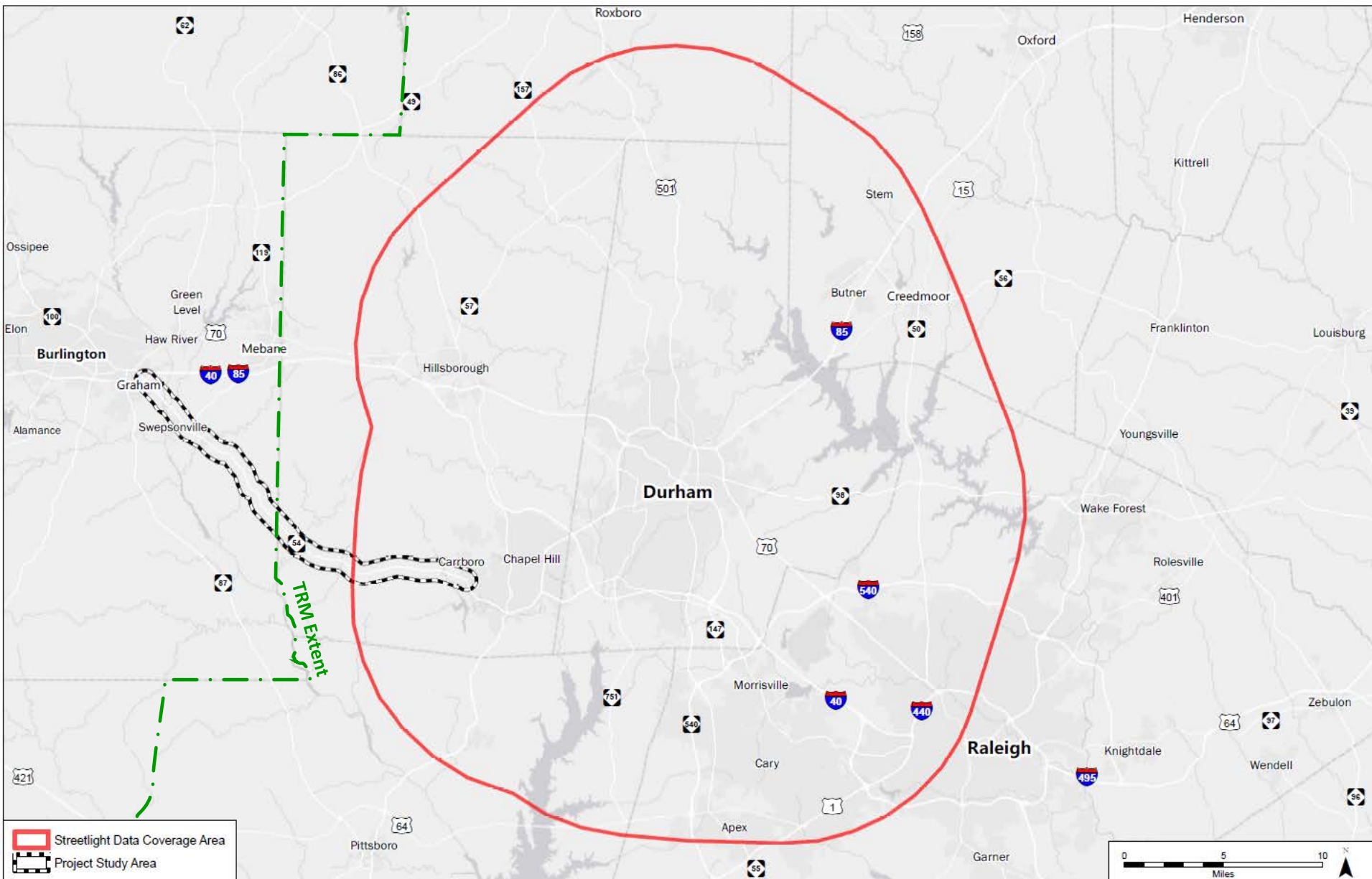
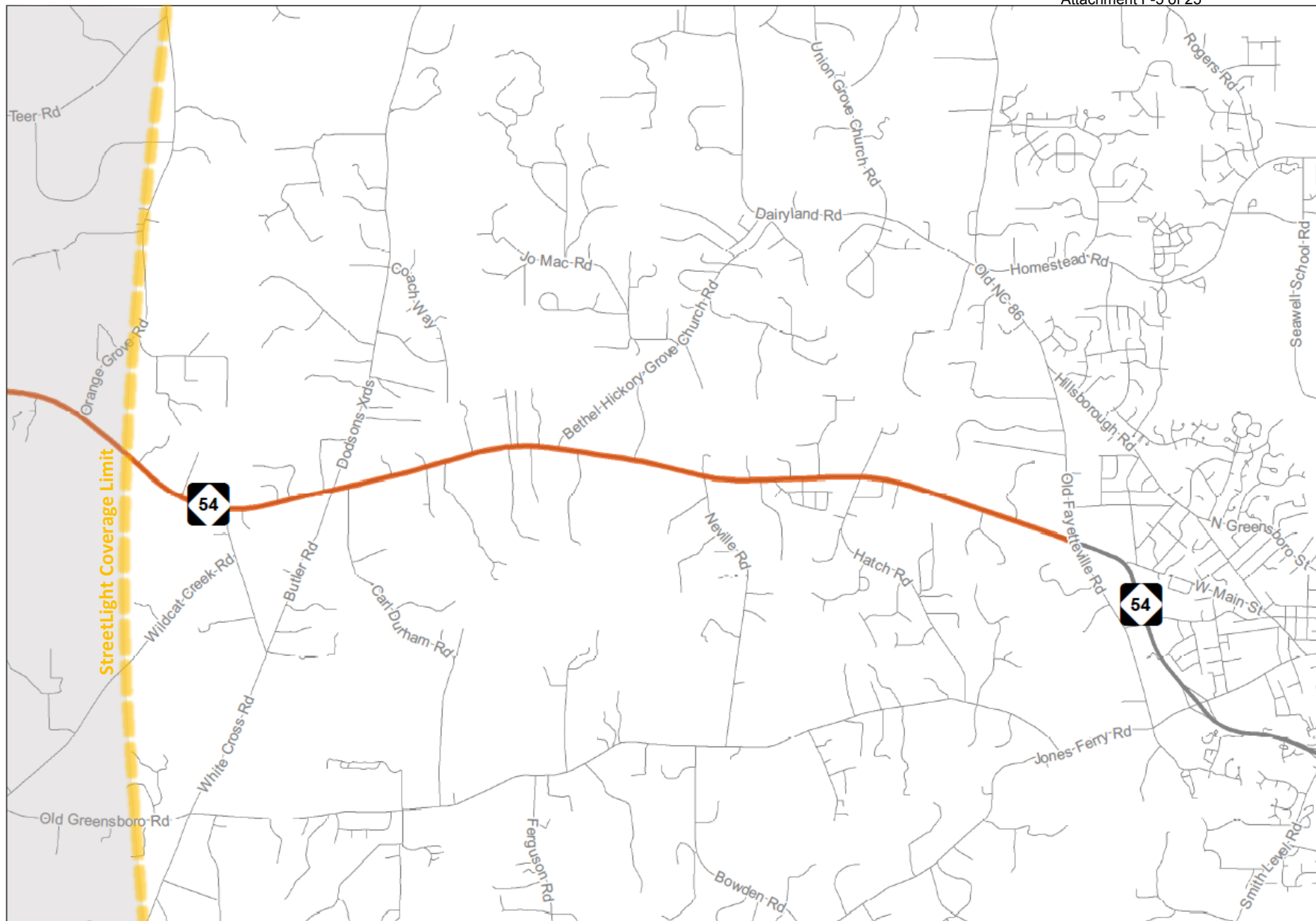


Figure 4: StreetLight InSight Dataset Coverage



Daily Vehicle-Trip Distribution (StreetLight InSight Data)

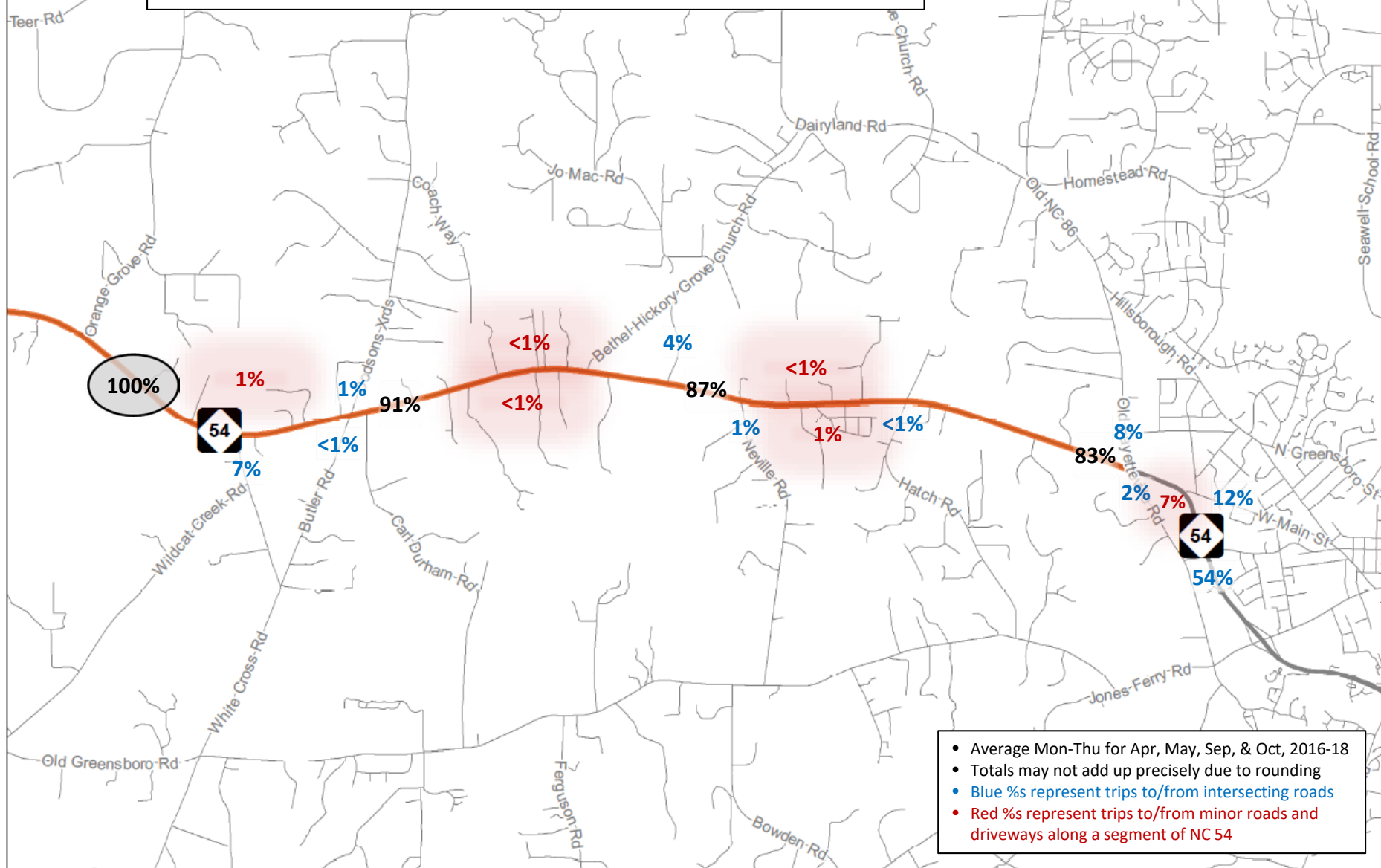
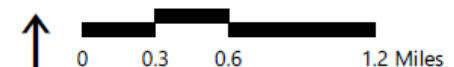


Figure 6: Origin-Destination Analysis – NC 54 East of Orange Grove Road



AM Peak Vehicle-Trip Distribution (StreetLight InSight Data)

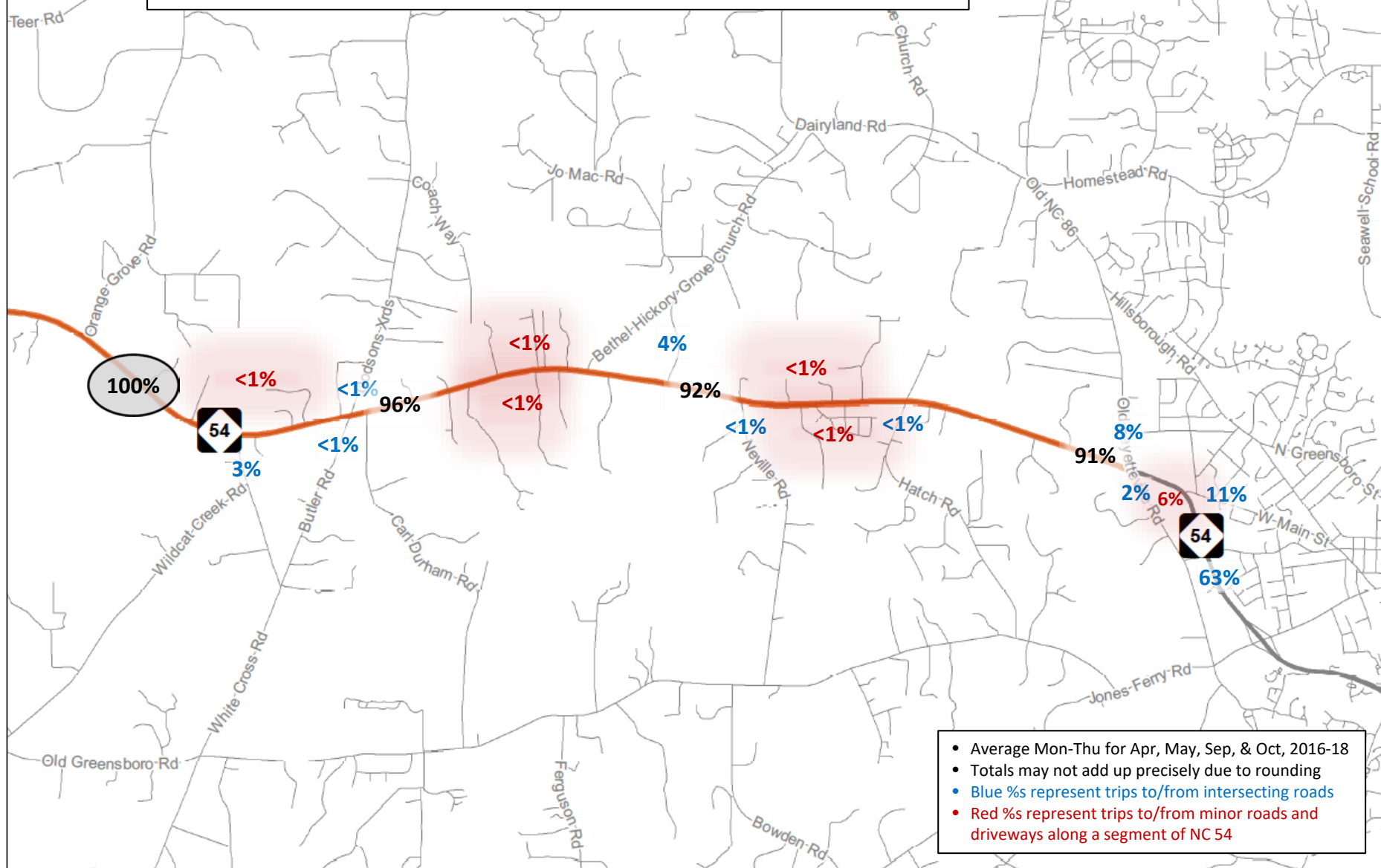


Figure 7: Origin-Destination Analysis – NC 54 East of Orange Grove Road

Daily Vehicle-Trip Distribution (StreetLight InSight Data)

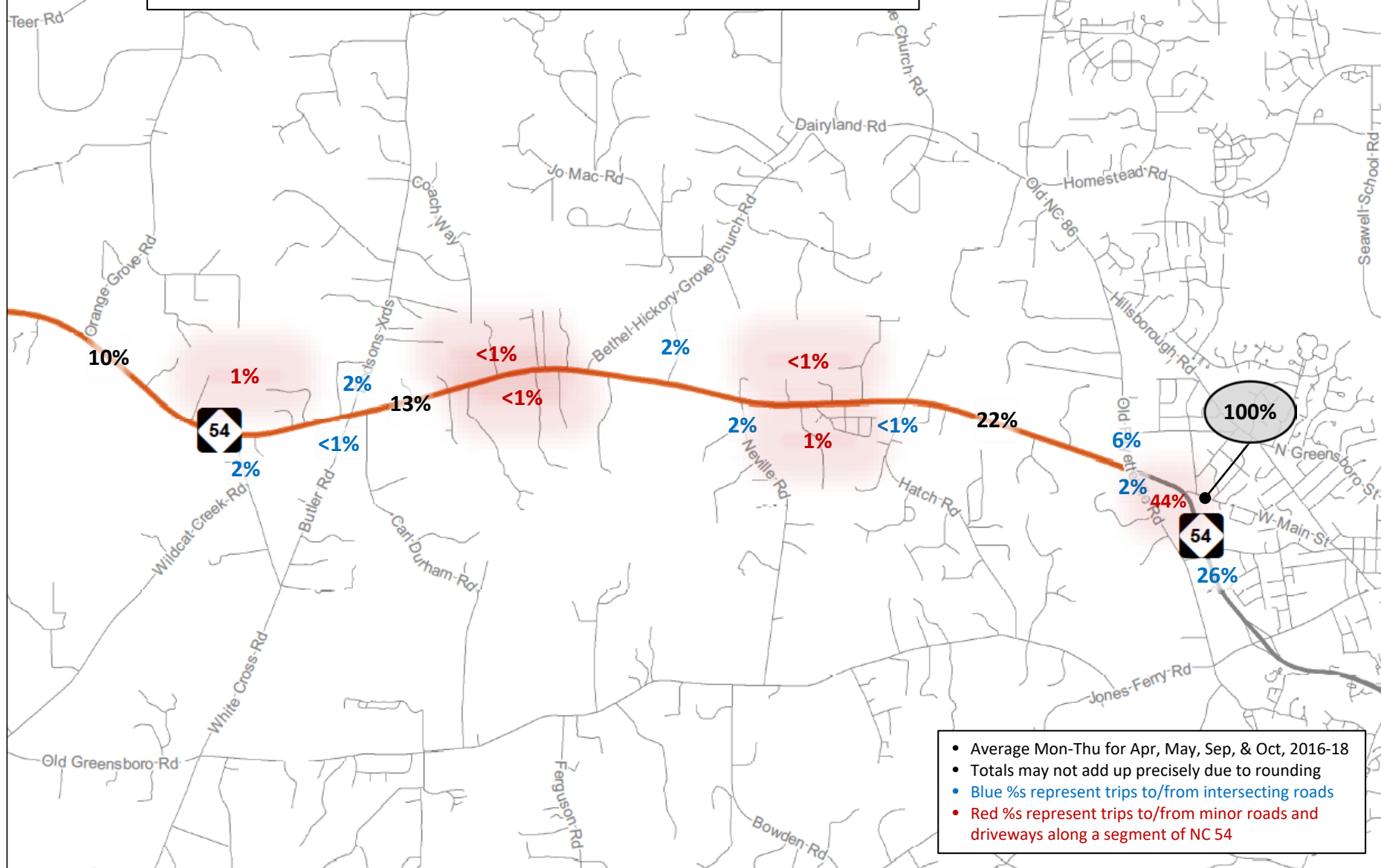
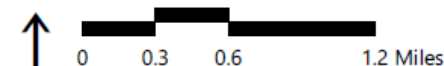


Figure 8: Origin-Destination Analysis – West Main St East of NC 54 Bypass



Daily Vehicle-Trip Distribution (StreetLight InSight Data)

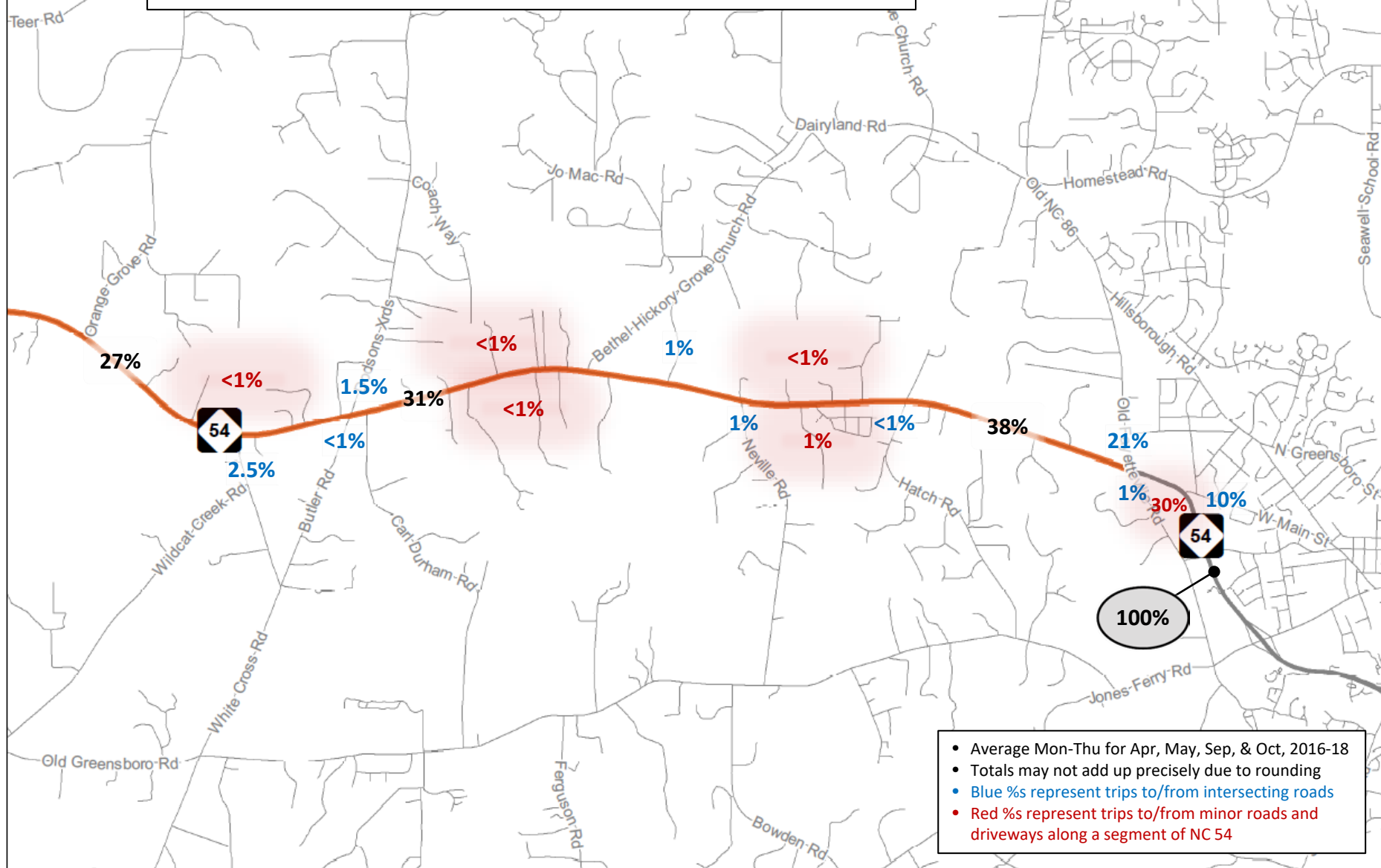
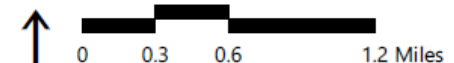


Figure 9: Origin-Destination Analysis –NC 54 Bypass South of West Main St



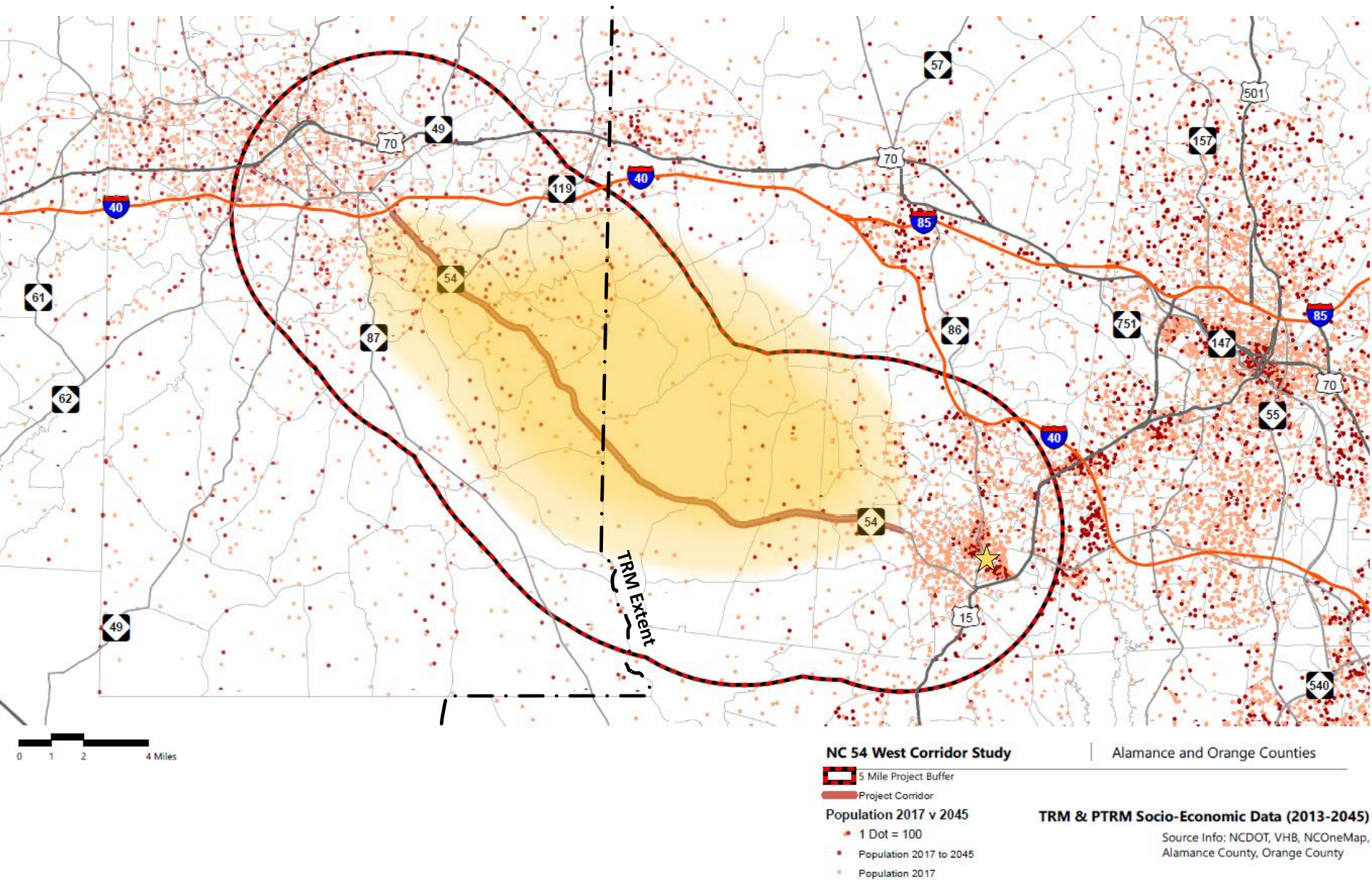


Figure 10b: TRM & PTRM Population Growth (2013 – 2045)

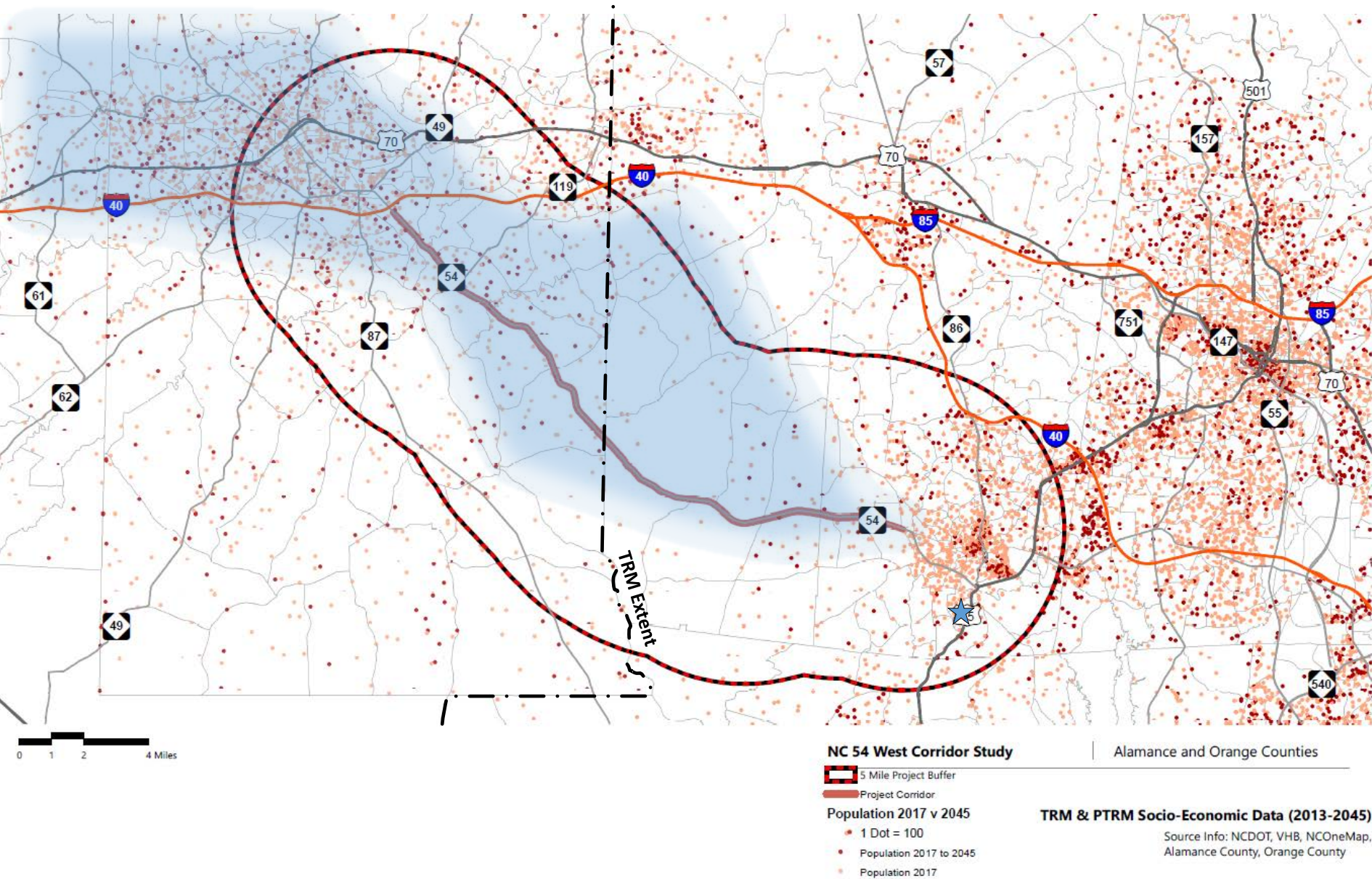


Figure 10c: TRM & PTRM Population Growth (2013 – 2045)

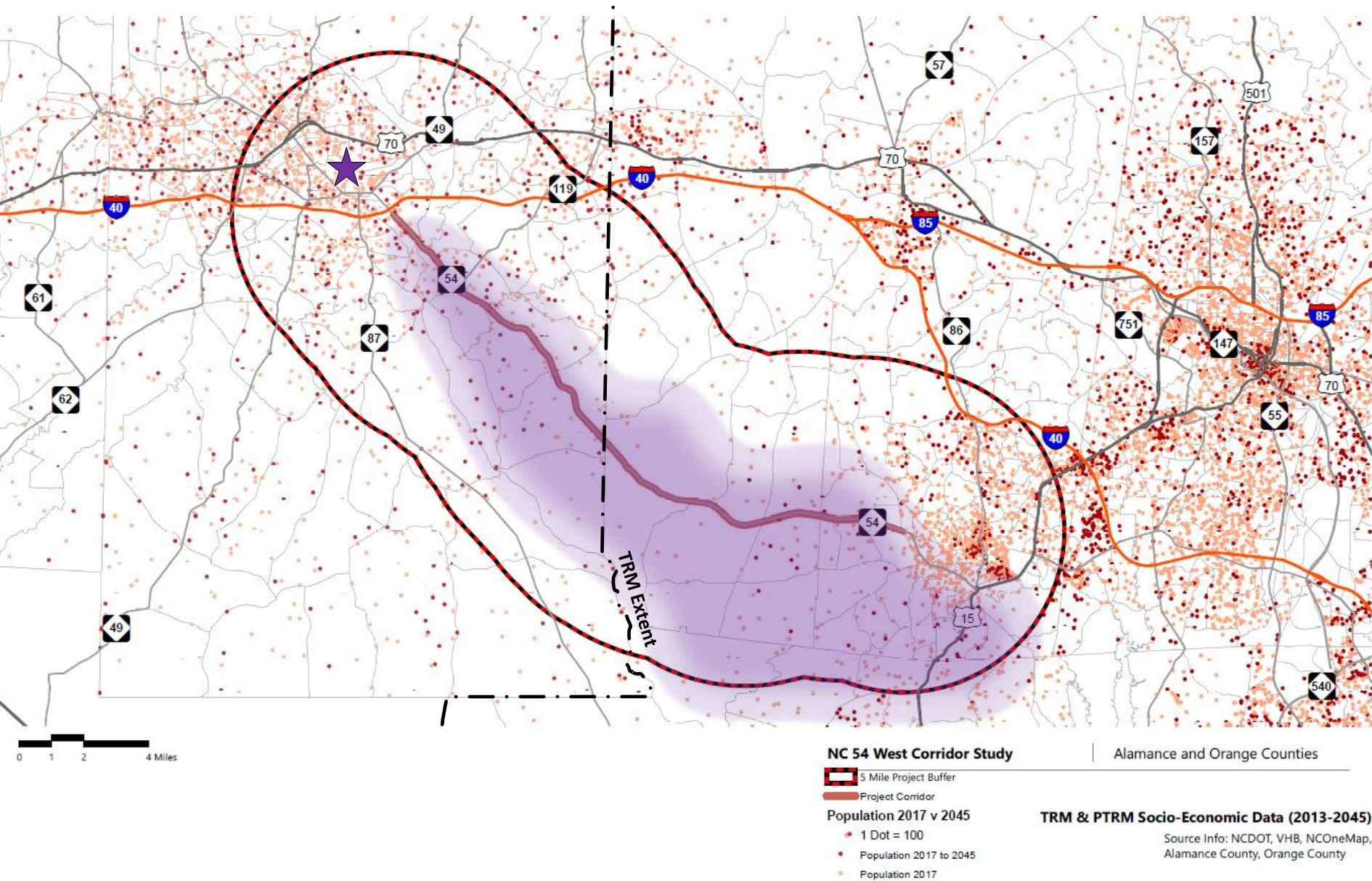


Figure 11a: TRM & PTRM Employment Growth (2013 – 2045)

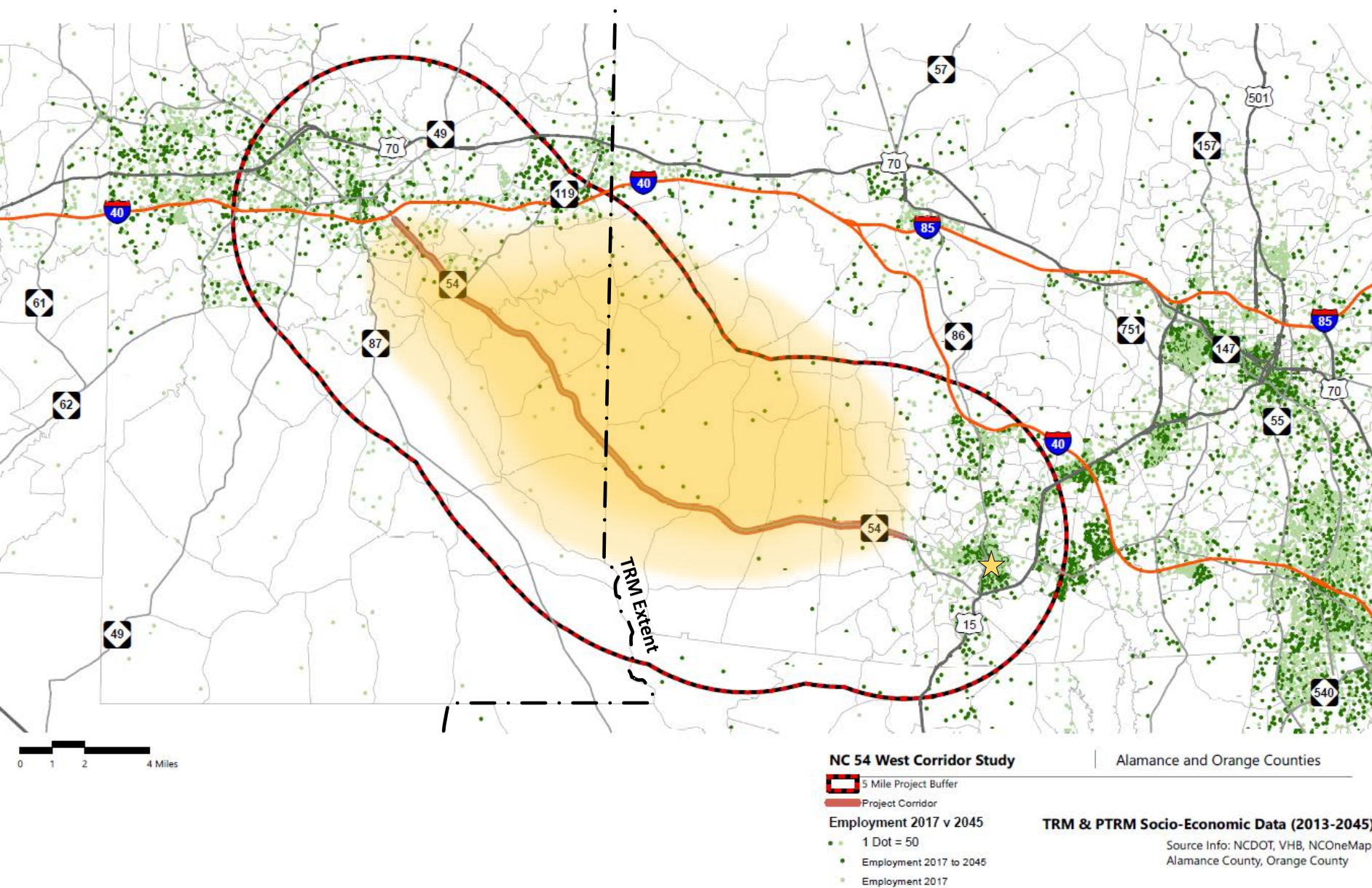


Figure 11b: TRM & PTRM Employment Growth (2013 – 2045)

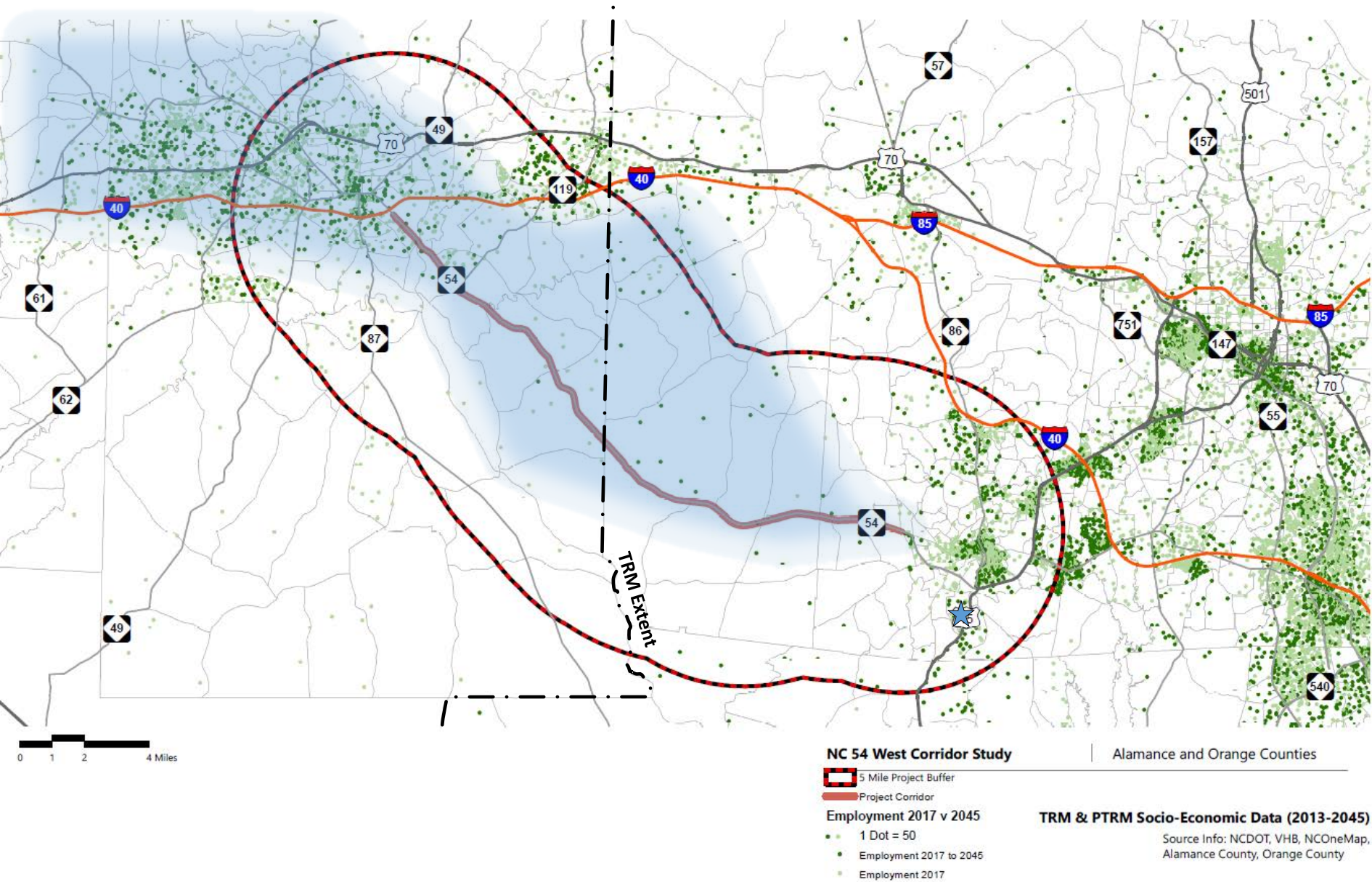
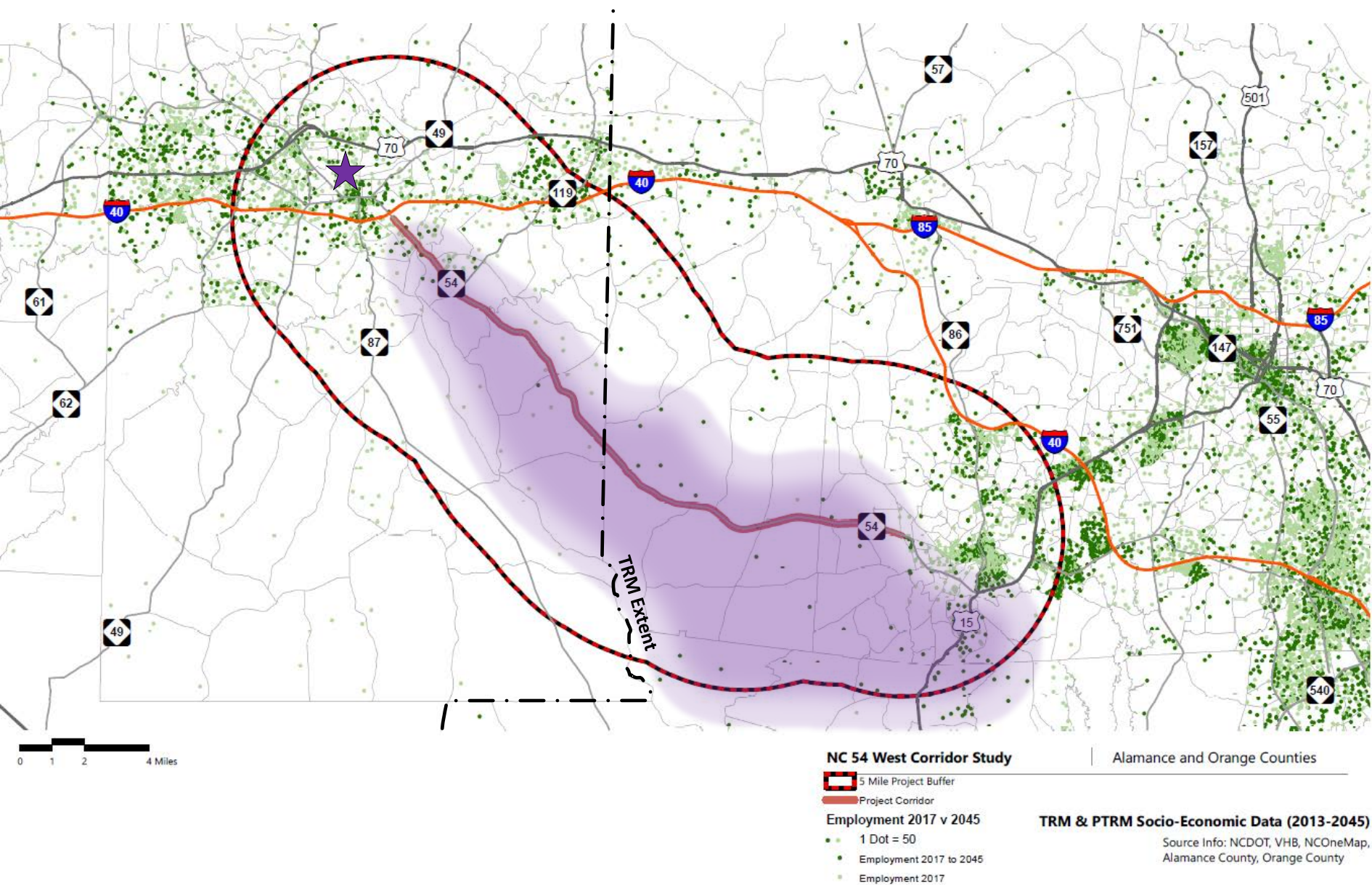


Figure 11c: TRM & PTRM Employment Growth (2013 – 2045)



Daily Vehicle-Trip Distribution (TRM)

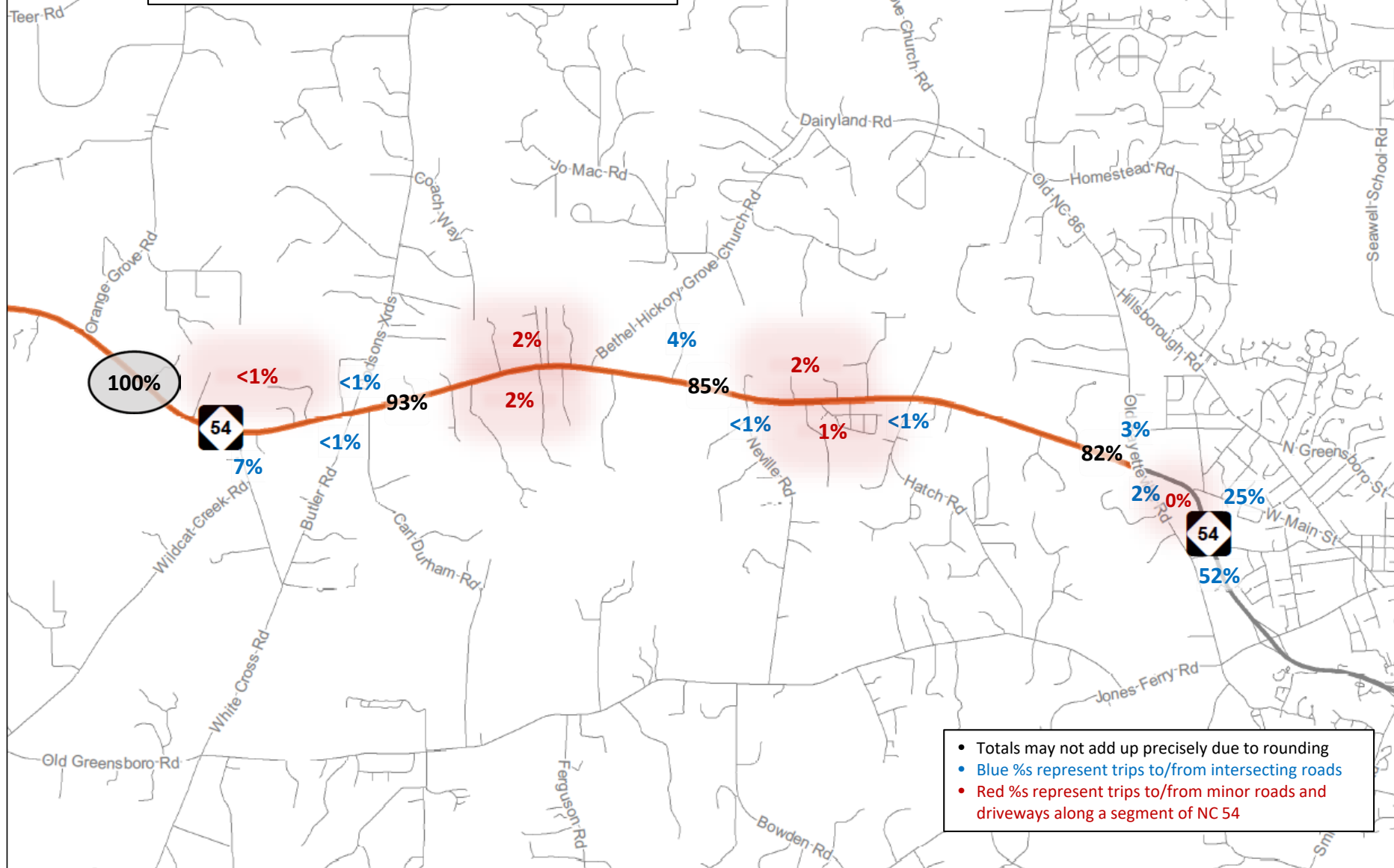


Figure 12: TRM Select Link Analysis – NC 54 East of Orange Grove Road



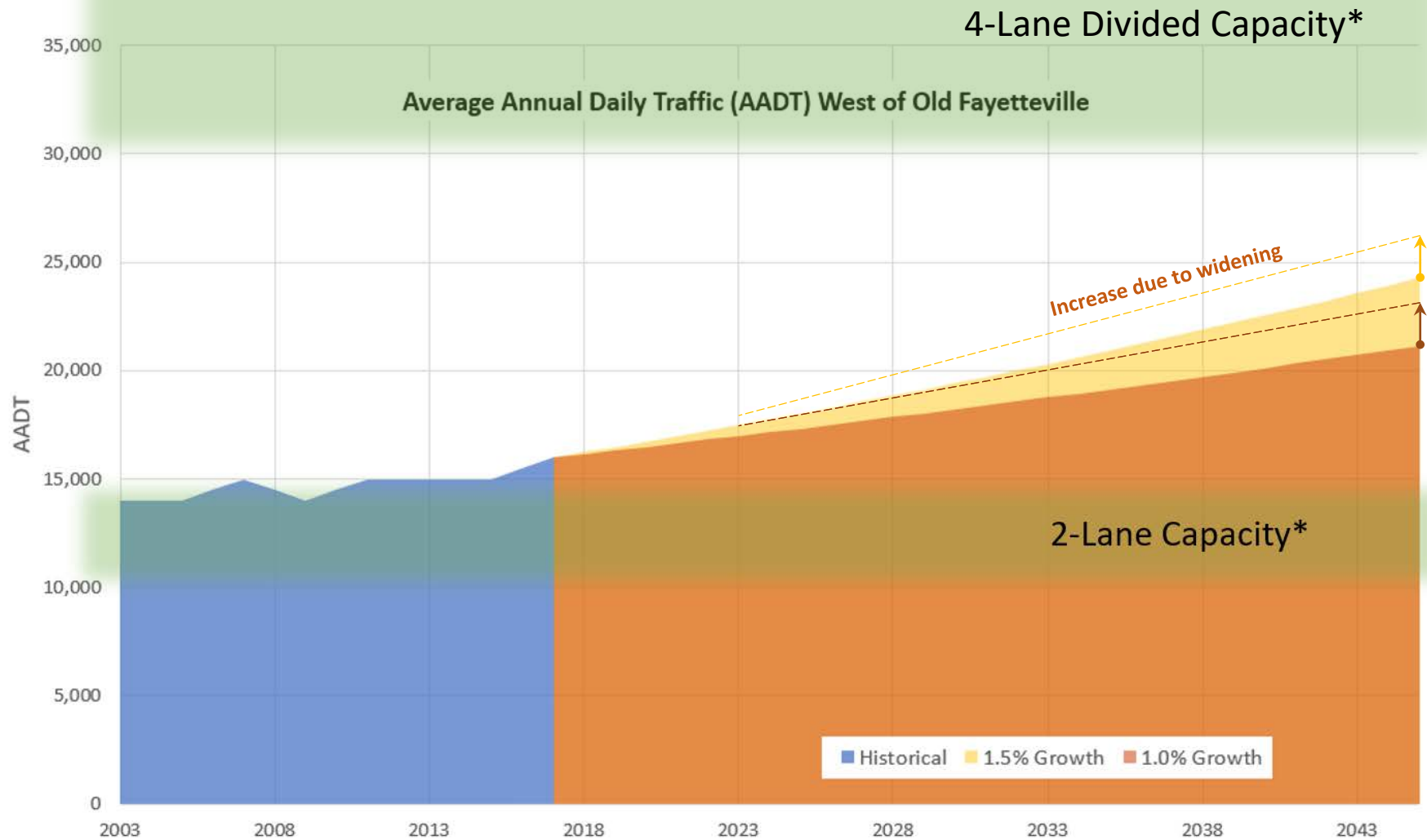


Figure 14: Relative Impacts of Traffic Shifts due to NC 54 Widening

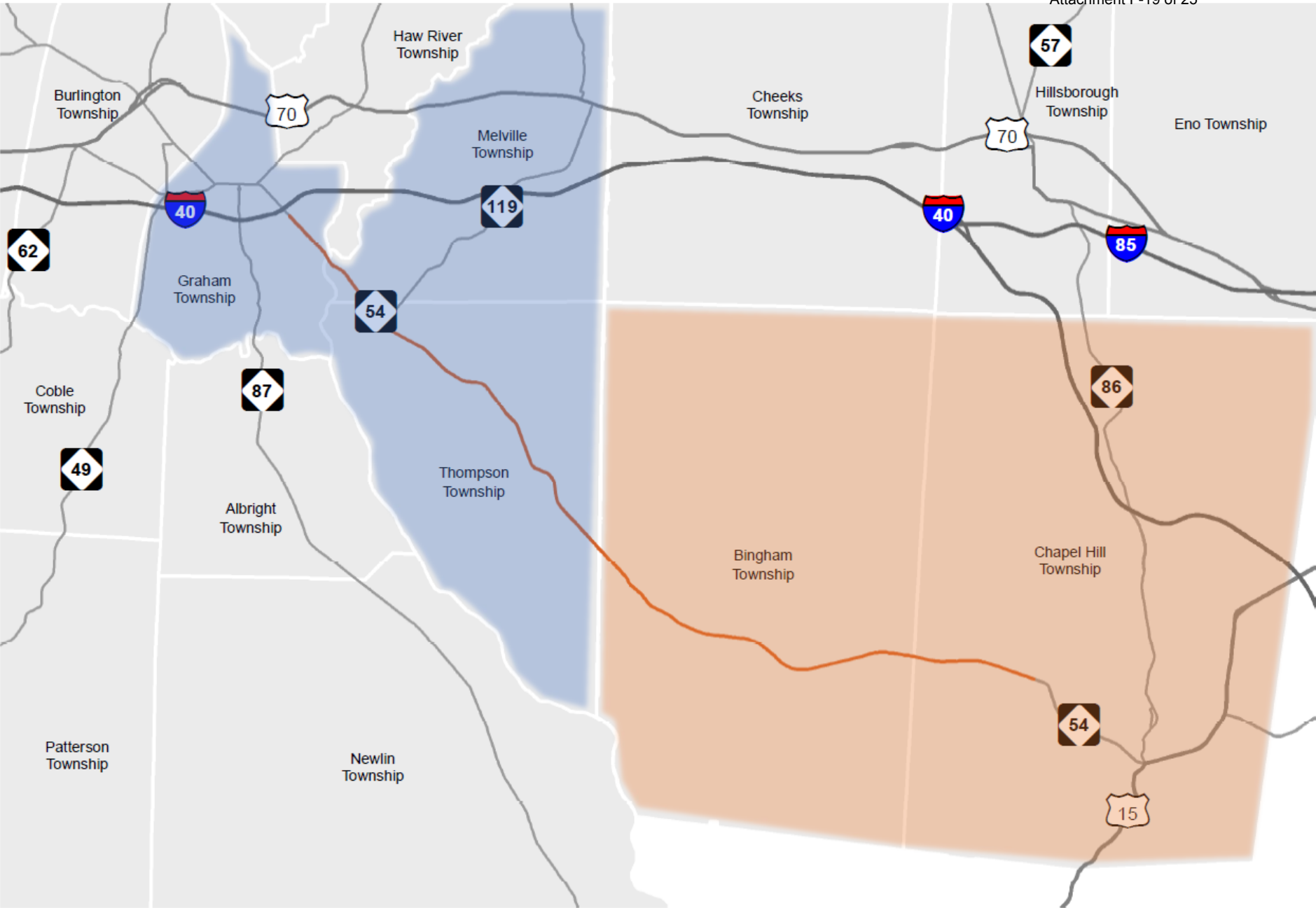


Figure 15: Areas Included in Population-AADT Correlation Analysis

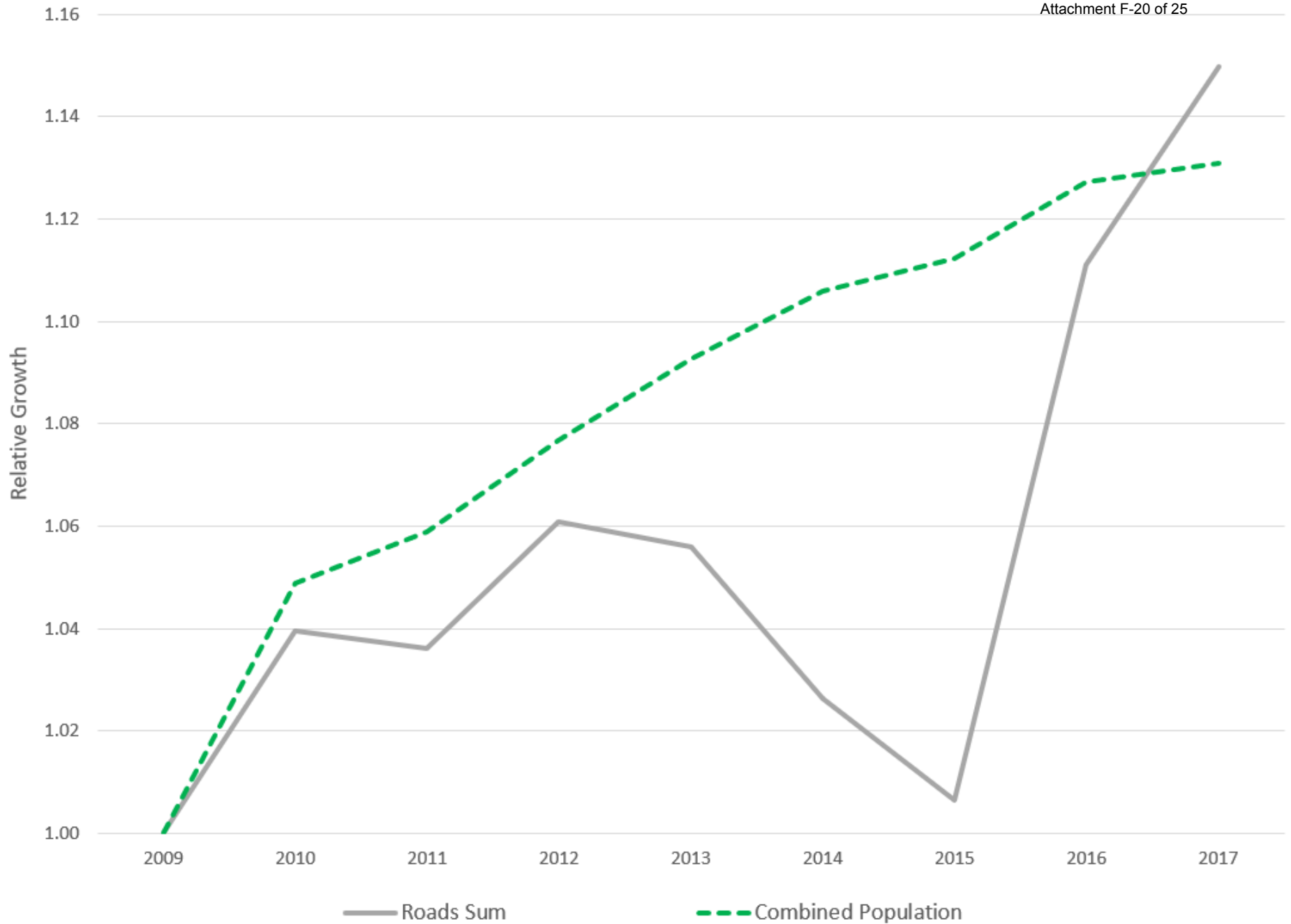


Figure 16: Comparison of Historical Population and AADT Aggregations

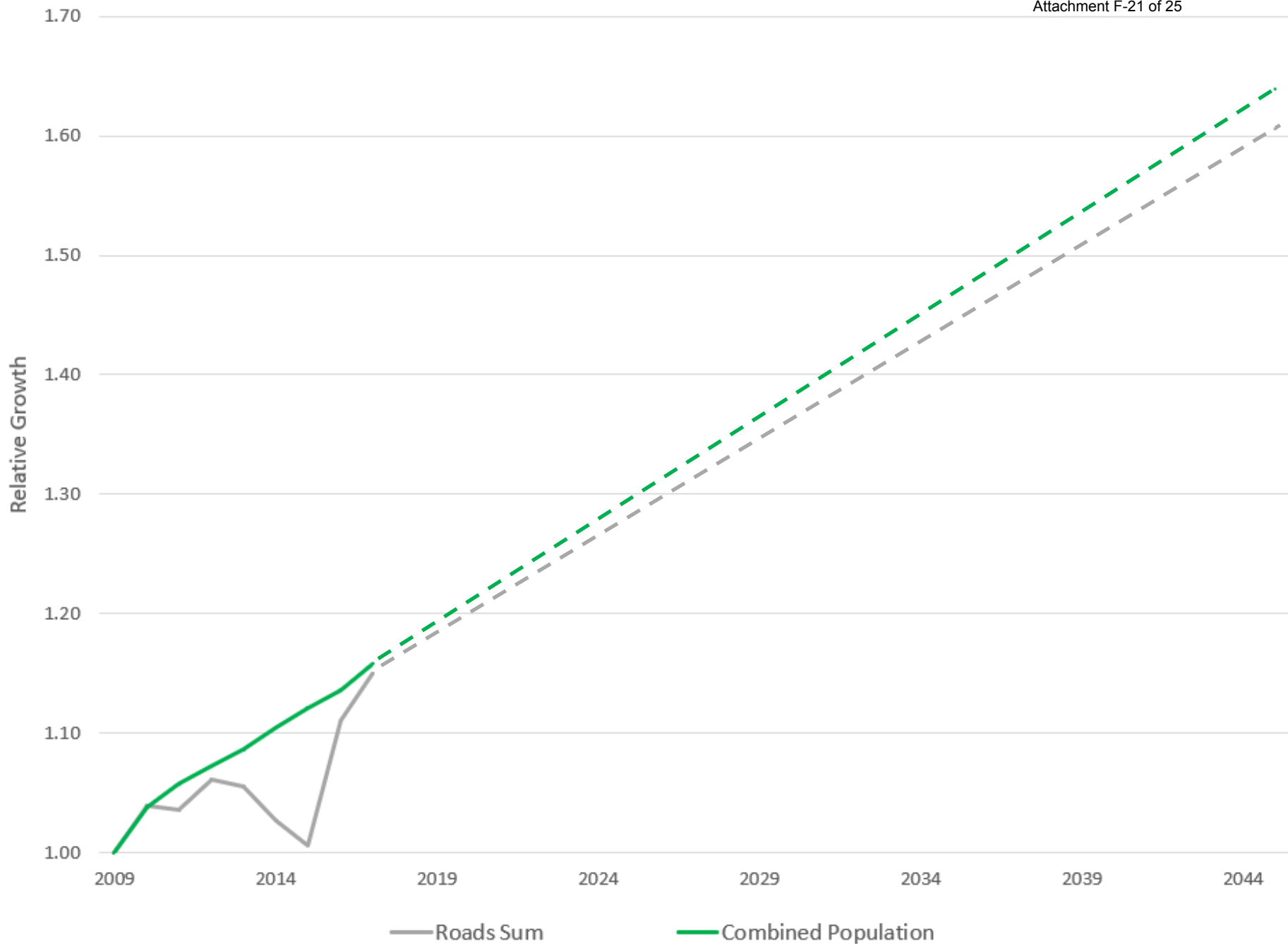


Figure 17: Comparison of Aggregated Population and AADT Forecasts

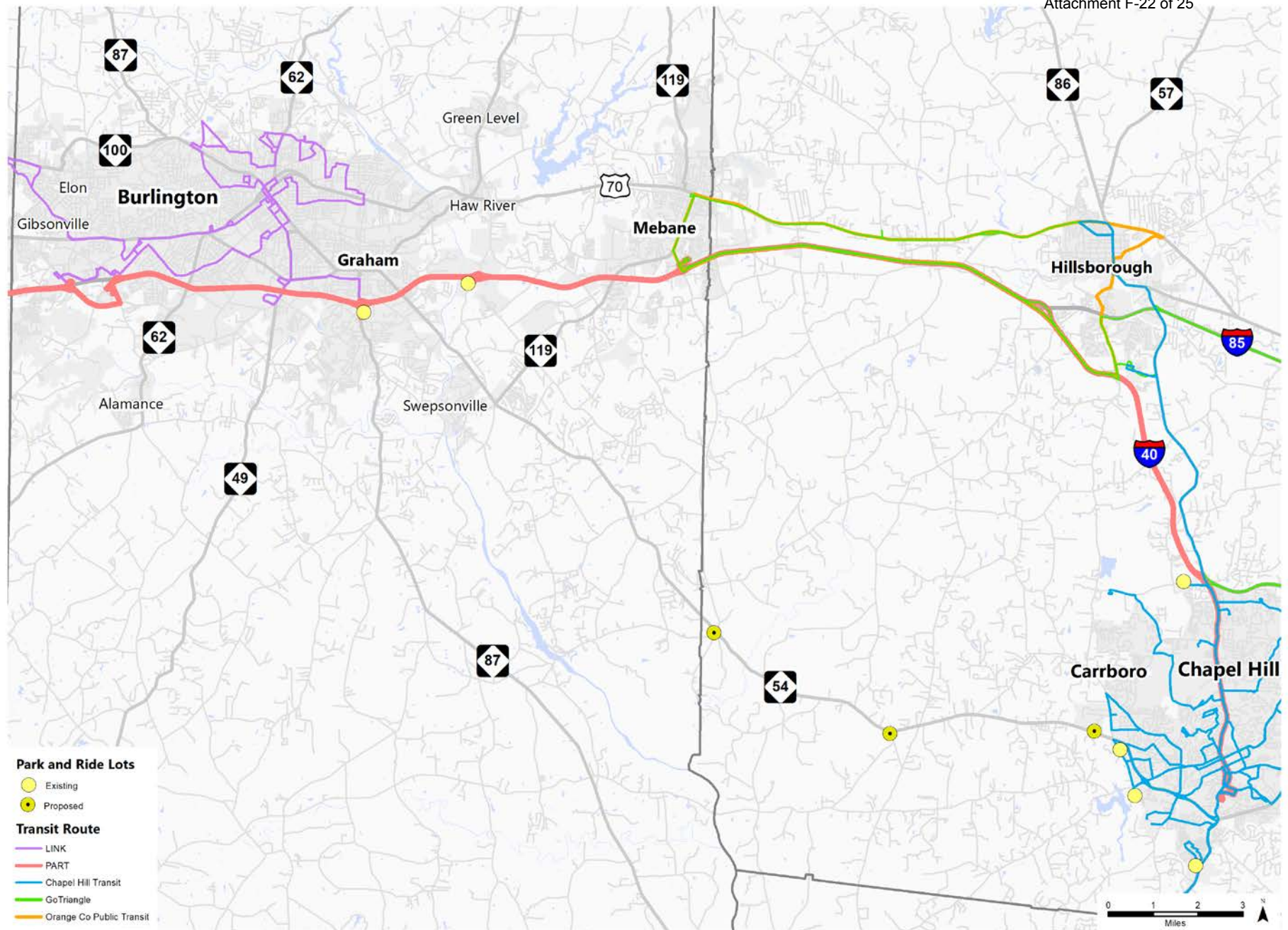
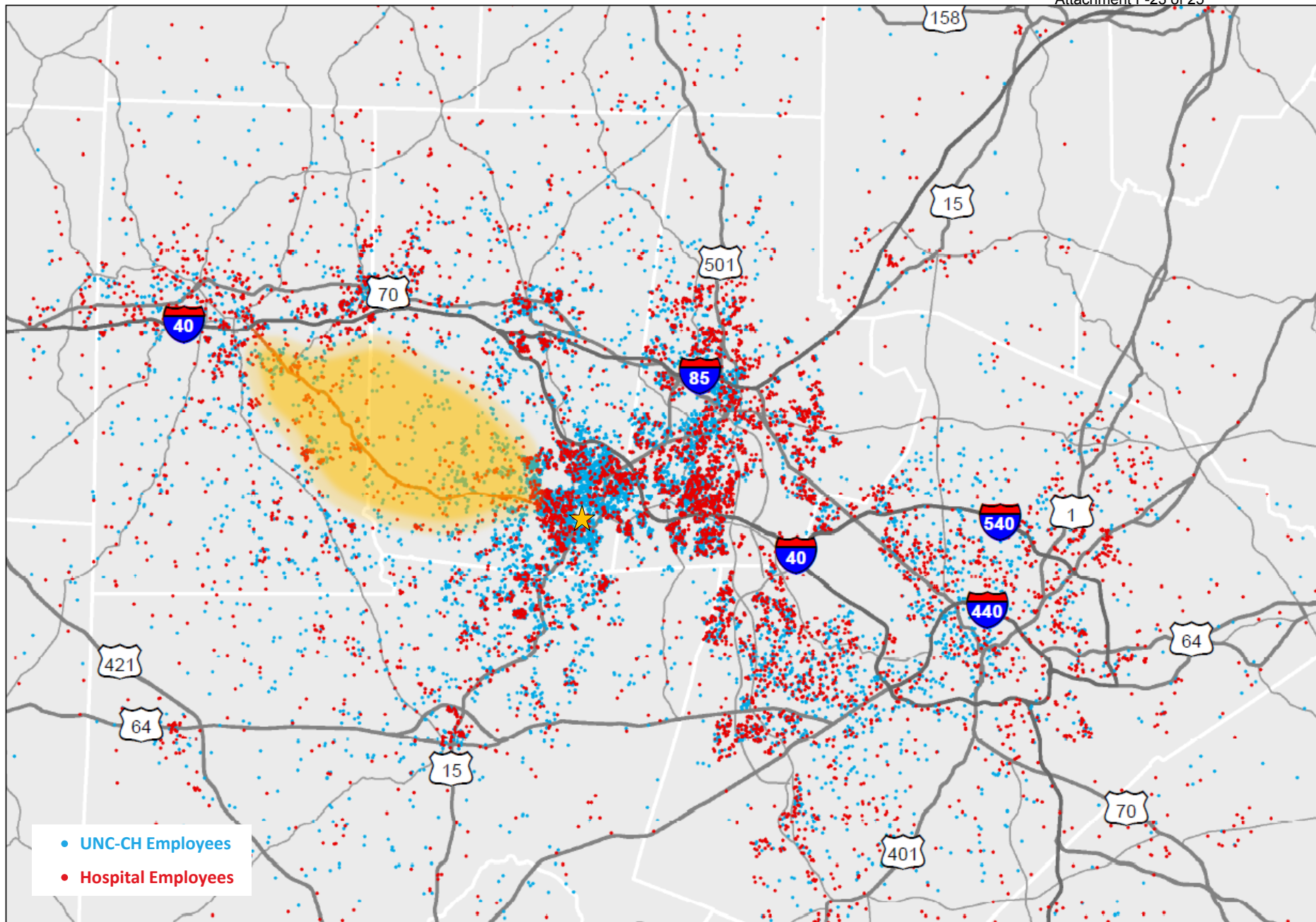
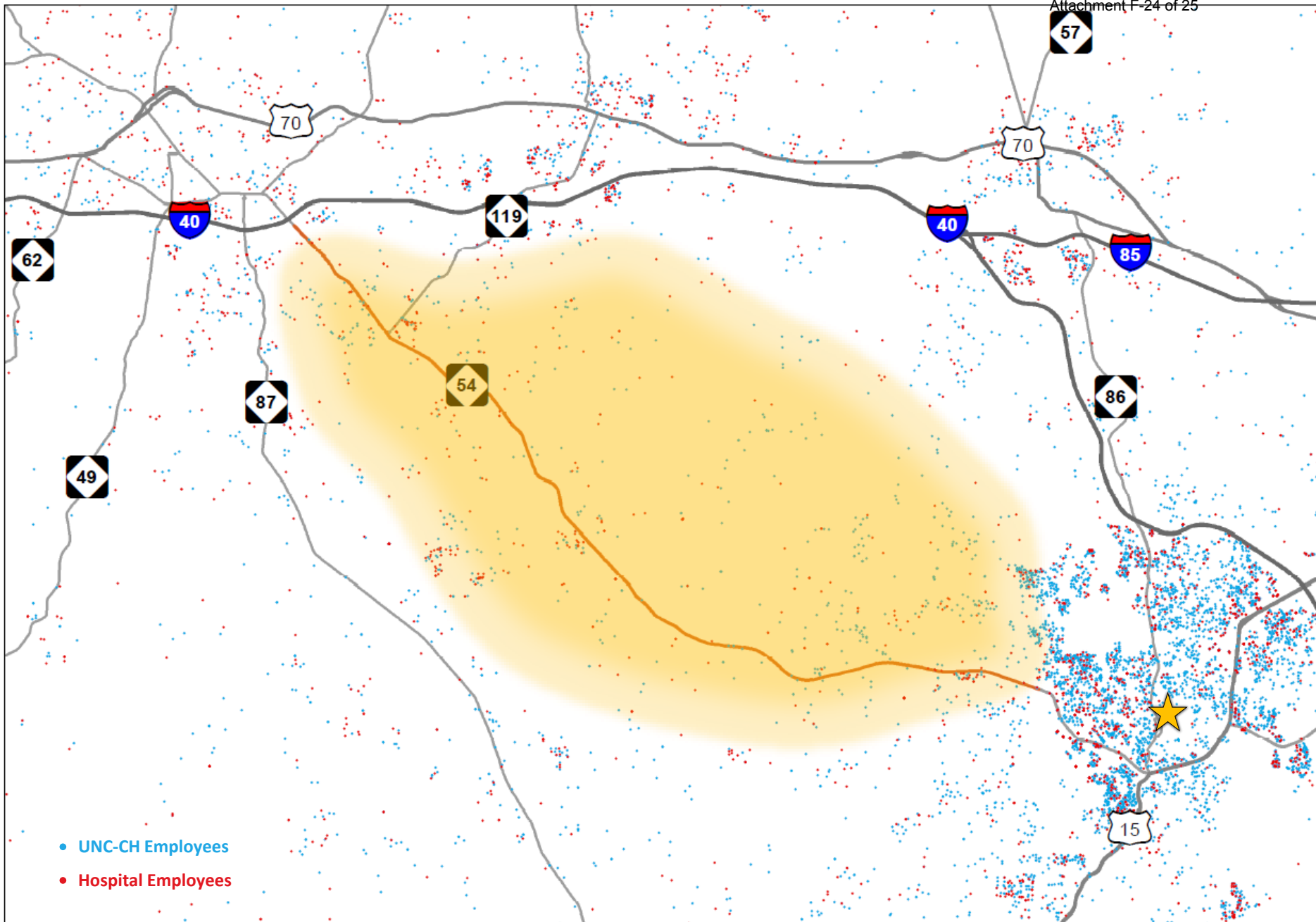


Figure 18: Transit Routes and Park-&-Ride Lots



Source: UNC-CH Development Plan, 2017 TIA Update

Figure 19: Regional Distribution of UNC-CH and Hospital Employee Residences (2017)



Source: UNC-CH Development Plan, 2017 TIA Update

 **Figure 20: Study Area Distribution of UNC-CH and Hospital Employee Residences (2017)**

