



COVID-19 Long Term Recovery Planning

*Carrboro Town Council
May 19, 2020*

Re-Opening vs. Recovery

- Re-Opening

- Easing Restrictions on Travel, Work, and Commerce
- Limited Term
- More of a Logistical Effort – cleaning, employee protections and precautions, distancing, and capacity limitations

- Recovery

- Long Term – Months to Years
- Strategic Process – May Emerge Different and Stronger
- Structure Needs to be Flexible and Scalable to Respond Over Time
- Community Engagement – Priorities, Needs, Trust, and Support

Coronavirus Relief Funds

- Short Term Relief – December 31 Deadline to Spend
- Board of Commissioners Considering Distribution to Towns

Coronavirus Relief Fund	\$	Per Capita Allocation
ORANGE	1,546,136.74	58%
CARRBORO	266,575.30	10%
CHAPEL HILL	746,410.84	28%
DURHAM	-	0%
HILLSBOROUGH	79,972.59	3%
MEBANE	26,657.53	1%
TOTAL	2,665,753.00	100%

Coronavirus Relief Funds

- Eligible Use Categories

- Medical Expenses

- Emergency Medical Response Expenses
 - Increasing Treatment Capacity

- Public Health Expenses

- Medical and Personal Protective Equipment
 - Disinfection of Public Spaces
 - Communication and Enforcement
 - Expenses for Quarantining Individuals

- Payroll Expenses

- In Excess of FY2019-20 Budgeted Funds

- Compliance with Public Health Measures

- Food Acquisition and Delivery
 - Remote Working
 - Care for Homeless Population

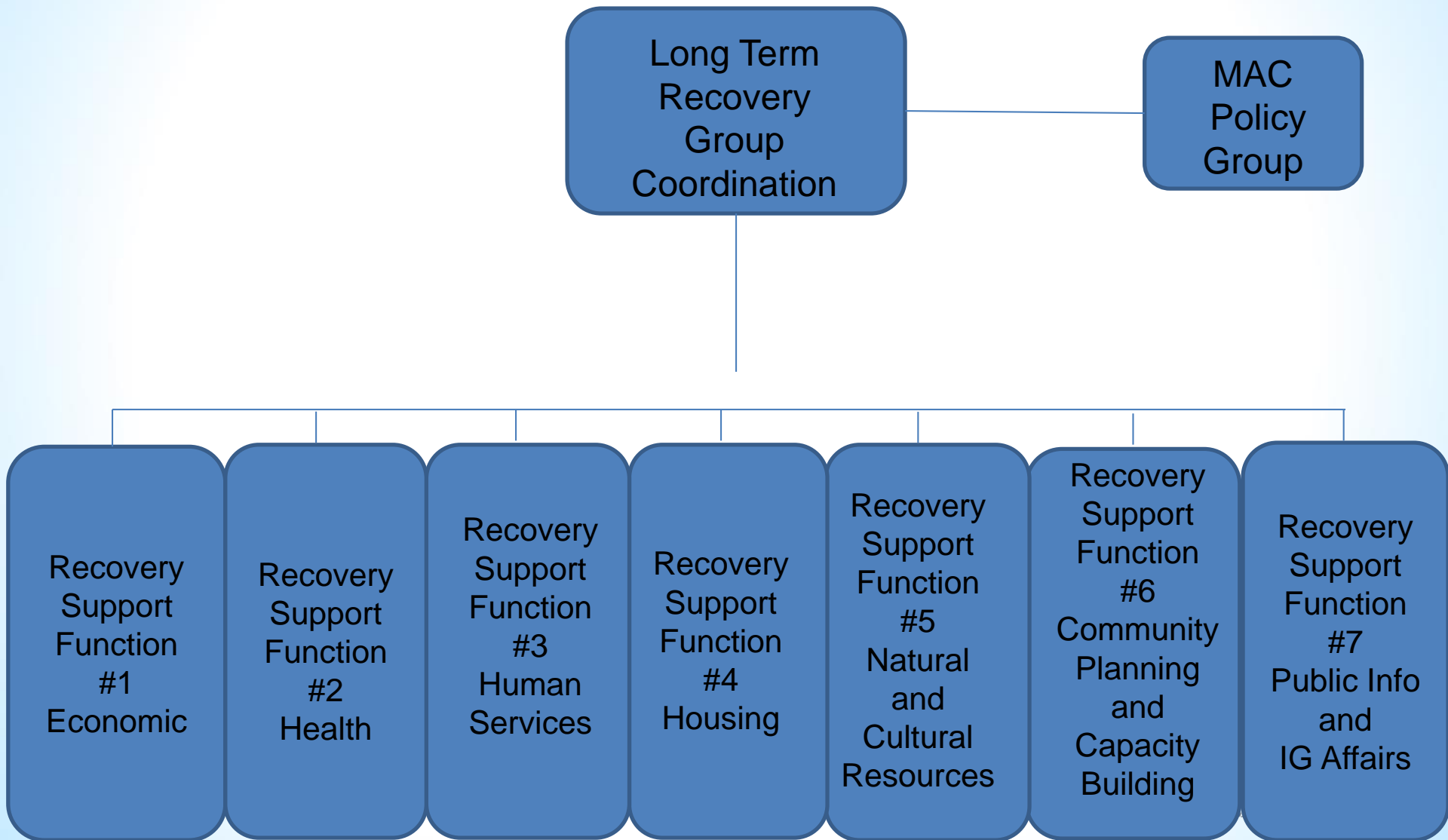
- Economic Support

- Small Business Grants

- Other Potential Uses

- Eviction and Foreclosure Prevention

Long Term Recovery Structure



Role of the Coordinating Agency

- Impact Assessment - Three Key Areas
 - Economy
 - Health and Social Services
 - Diverse Communities
- Facilitate Recovery Support Functions
 - Refine Stakeholder Participation
 - Identify Most Appropriate Outside Funding Sources
 - Guidelines and Recommendations for Long Term Recovery
 - Promote Equitable Outcomes for Recovery

Role of the Coordinating Agency

- Social Equity Focus
 - Understand Existing Issues Likely to be Exacerbated by Pandemic
 - Use Multijurisdictional GARE Team to Mitigate Adverse Impacts to People of Color
- Community Engagement with Physical Distancing
 - Website and Social Media
 - Online Surveys
 - Targeted Hard Copy Surveys
- **Questions and Comments?**