

MINOR MODIFICATION TO CONDITIONAL USE PERMIT
THE BUTLER PROPERTY, CARRBORO NC



VICINITY MAP, N.T.S.

ZONING SUMMARY INFORMATION

PIN NUMBER	9778-96-8060
EXISTING ZONING	B1-C CU
PROPOSED ZONING	B1-C CU
EXISTING USES	3.00
APPROVED USE	HOTEL
PROPOSED USE	15.810 TOWN OWNED AND/OR OPERATED PUBLIC PARKING LOT

ACCESSORY USE OUTDOOR PERFORMANCE SPACE

IMPERVIOUS AREA SUMMARY

EXISTING	22,602 SF
DEMO	0 SF
PROPOSED	0 SF

VEHICLE PARKING SUMMARY

DAYTIME	100
NIGHTTIME	110
ACCESSIBLE PARKING	4

DRAWING INDEX

CVR	COVER
EC1	EXISTING CONDITIONS
SD1	PROPOSED SITE PLAN
SD2	ACCESSORY USE SITE PLAN

Property Owner:

Main Street Properties of Chapel
Hill, LLC
PO Box 2152
Chapel Hill, NC 27515

Tenant 1:

Town of Carrboro
c/o Town Manager
301 West Main Street
Carrboro, NC 27510

Tenant 2:

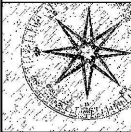
Frank Heath
Sweet D, LLC
DBA Cat's Cradle
300 East Main Street
Carrboro, NC 27510

frank@catscradle.com

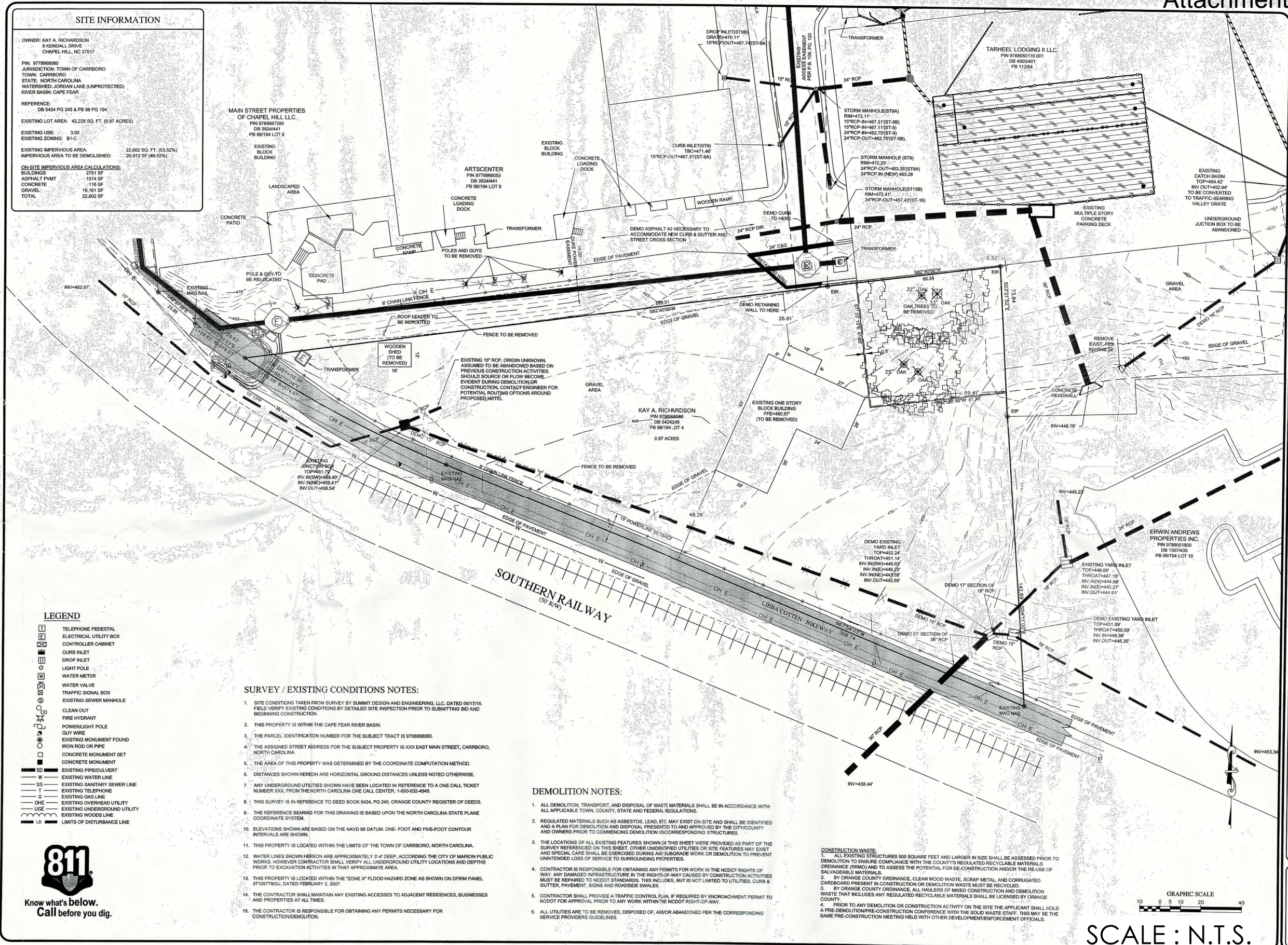
Architect:

Jim Spencer, AIA, LEED BD+C
Jim Spencer Architects, PA
109-A Brewer Lane
Carrboro, NC 27510

jspencerjsa@gmail.com
919.960.6680



Jim Spencer Architects, PA
109-A Brewer Lane
Carrboro, NC 27510
jimspencerarchitects.com



15-HGI_XC

C-2

PROJECT NO.

15-HGI

DRAWING NAME:

15-HGI_XC

SHEET NO.

C-2

CUP MAJOR MODIFICATION DRAWINGS

HILTON GARDEN INN

OWNER: HILTON HOTELS & RESORTS, INC.

APPLICANT: KENDALL DRIVE

CHAPPEL HILL, NC 27517

CHAPPEL HILL, NC 27515 (PHONE)

EXISTING CONDITIONS & DEMOLITION PLAN

↑

SUMMIT

Creatively Inspired • Technically Expert

DESIGN AND ENGINEERING SERVICES

1501 Massachusetts Drive

Winston-Salem, NC 27157

Phone: (713) 725-5555 • Fax: (713) 725-6076

www.summitdme.com

NOT FOR CONSTRUCTION

NORTH CAROLINA

58

2015

2015

2015

2015

2015

2015

2015

2015

2015

2015

2015

2015

2015

2015

2015

2015

2015

2015

2015

2015

2015

2015

2015

2015

2015

2015

2015

2015

2015

2015

2015

2015

2015

2015

2015

2015

2015

2015

2015

2015

2015

2015

2015

2015

2015

2015

2015

2015

2015

2015

2015

2015

2015

2015

2015

2015

2015

2015

2015

2015

2015

2015

2015

2015

2015

2015

2015

2015

2015

2015

2015

2015

2015

2015

2015

2015

2015

2015

2015

2015

2015

2015

2015

2015

2015

2015

2015

2015

2015

2015

2015

2015

2015

2015

2015

2015

2015

2015

2015

2015

2015

2015

2015

2015

2015

2015

2015

2015

2015

2015

2015

2015

2015

2015

2015

2015

2015

2015

2015

2015

2015

2015

2015

2015

2015

2015

2015

2015

2015

2015

2015

2015

2015

2015

2015

2015

2015

2015

2015

2015

2015

2015

2015

2015

2015

2015

2015

2015

2015

2015

2015

2015

2015

2015

2015

2015

2015

2015

2015

2015

2015

2015

2015

2015

2015

2015

2015

2015

2015

2015

2015

2015

2015

2015

2015

2015

2015

2015

2015

2015

2015

2015

2015

2015

2015

2015

2015

2015

2015

2015

2015

2015

2015

2015

2015

2015

2015

2015

2015

2015

2015

2015

2015

2015

2015

2015

2015

2015

2015

2015

2015

2015

2015

2015

2015

2015

2015

2015

2015

2015

2015

2015

2015

2015

2015

2015

2015

2015

2015

2015

2015

2015

2015

2015

2015

2015

2015

2015

2015

2015

2015

2015

2015

2015

2015

2015

2015

2015

2015

2015

2015

2015

2015

2015

2015

2015

2015

2015

2015

2015

2015

2015

2015

2015

2015

2015

2015

2015

2015

2015

2015

2015

2015

2015

2015

2015

2015

2015

2015

2015

2015

2015

2015

2015

2015

2015

2015

2015

2015

2015

2015

2015

2015

2015

2015

2015

2015

2015

2015

2015

2015

2015

2015

2015

2015

2015

2015

2015

2015

2015

2015

2015

2015

2015

2015

2015

2015

2015

2015

2015

2015

2015

2015

2015

2015

2015

2015

2015

2015

2015

2015

2015

2015

2015

2015

2015

2015

2015

2015

2015

2015

2015

2015

2015

2015

2015

2015

2015

2015

2015

2015

2015

2015

2015

2015

2015

2015

2015

2015

2015

2015

2015

2015

2015

2015

2015

2015

2015

2015

2015

2015

2015

2015

2015

2015

2015

2015

2015

2015

2015

2015

2015

2015

2015

2015

2015

2015

2015

2015

2015

2015

2015

2015

2015

2015

2015

2015

2015

2015

2015

2015

2015

2015

2015

2015

2015

2015

2015

2015

2015

2015

2015

2015

2015

2015

2015

2015

2015

2015

2015

2015

2015

2015

2015

2015

2015

2015

2015

2015

2015

2015

2015

2015

2015

2015

2015

2015

2015

2015

2015

2015

2015

2015

2015

2015

2015

2015

2015

2015

2015

2015

2015

2015

2015

2015

2015

2015

2015

2015

2015

2015

2015

2015

2015

2015

2015

2015

2015

2015

2015

2015

2015

2015

2015

2015

2015

2015

2015

2015

2015

2015

2015

2015

2015

2015

2015

2015

2015

2015

2015

2015

2015

2015

2015

2015

2015

2015

2015

2015

2015

2015

2015

2015

2015

2015

2015

2015

2015

2015

2015

2015

2015

2015

2015

2015

2015

2015

2015

2015

2015

2015

2015

2015

2015

2015

2015

2015

2015

2015

2015

2015

2015

2015

2015

2015

2015

2015

2015

2015

2015

2015

2015

2015

2015

2015

2015

2015

2015

2015

2015

2015

2015

2015

2015

2015

2015

2015

2015

2015

2015

2015

2015

2015

2015

2015

2015

2015

2015

2015

2015

2015

2015

2015

2015

2015

2015

2015

2015

2015

2015

2015

2015

2015

2015

2015

2015

2015

2015

2015

2015

2015

2015

2015

2015

2015

2015

2015

2015

2015

2015

2015

2015

2015

2015

2015

2015

2015

2015

2015

2015

2015

2015

2015

2015

2015

2015

2015

2015

2015

2015

2015

2015

2015

2015

2015

2015

2015

2015

2015

2015

2015

2015

2015

2015

2015

2015

2015

2015

2015

2015

2015

2015

2015

2015

2015

2015

2015

2015

2015

2015

2015

2015

2015

2015

2015

2015

2015

2015

2015

2015

2015

2015

2015

2015

2015

2015

2015

2015

2015

2015

2015

2015

2015

2015

2015

2015

2015

2015

2015

2015

2015

2015

2015

2015

2015

2015

2015

2015

2015

2015

2015

2015

2015

2015

2015

2015

2015

2015

2015

2015

2015

2015

2015

2015

2015

2015

2015

2015

2015

2015

2015

2015

2015

2015

2015

2015

2015

2015

2015

2015

2015

2015

2015

2015

2015

2015

2015

2015

2015

2015

2015

2015

2015

2015

2015

2015

2015

2015

2015

2015

2015

2015

2015

2015

2015

2015

2015

2015

2015

2015

2015

2015

2015

2015

2015

2015

2015

2015

2015

2015

2015

2015

2015

2015

2015

2015

2015

2015

2015

2015

2015

2015

2015

2015

2015

2015

2015

2015

2015

2015

2015

2015

2015

2015

2015

2015

2015

2015

2015

2015

2015

2015

2015

2015

2015

2015

2015

2015

2015

2015

2015

2015

2015

2015

2015

2015

2015

2015

2015

2015

2015

2015

2015

2015

2015

2015

2015

2015

2015

2015

2015

2015

2015

2015

2

AMANTE

HAMPTON INN

PARKING DECK

ARTSCENTER

VECINO

BOYD STREET

NOTE:
EXISTING DRAINAGE
SWALE TO BE PIPED

23

18

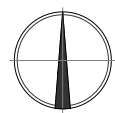
6

EXISTING OAK
TO REMAINEXISTING
CONCRETE PADEXISTING OAK
TO REMAINEXISTING OAK
TO REMAINEXISTING BMP
TO REMAIN

DAYTIME PARKING TOTAL = 100 SPACES
NIGHTTIME PARKING TOTAL = 110 SPACES

LEGEND

- (A) ADA PARKING AND ACCESS
- (B) PEDESTRIAN ACCESS TO LIBBA COTTEN BIKEWAY
- (C) NIGHT PARKING - MONITORED, ADDITIONAL 10 SPACES
- (D) ENTRY - NEW CONCRETE APRON

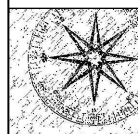


NORTH

1
SD1

TEMPORARY SATELLITE PARKING PLAN

SCALE = 1:40

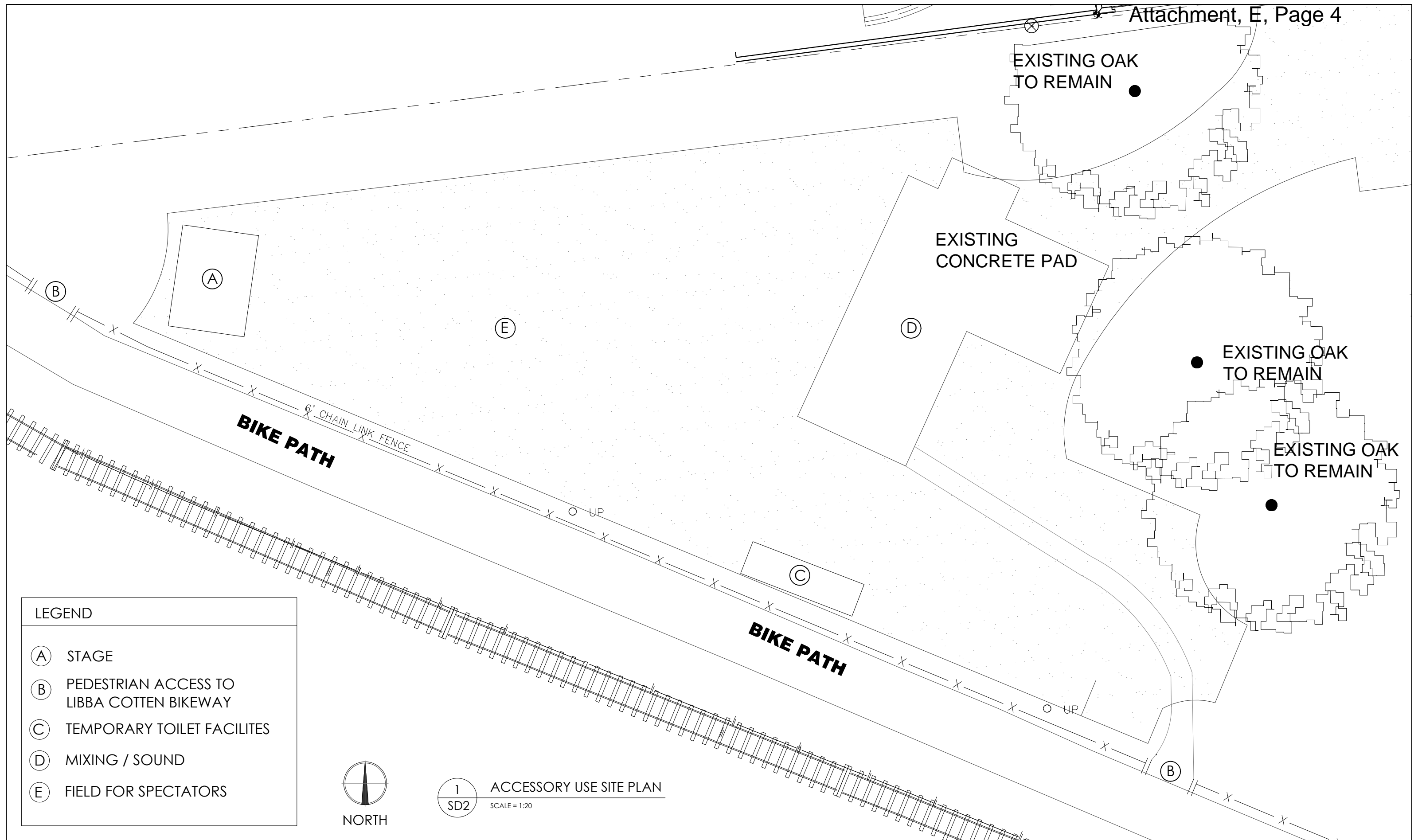


Jim Spencer Architects, PA
109-A Brewer Lane
Carrboro, NC 27510
jimspencerarchitects.com

MINOR MODIFICATION TO CONDITIONAL USE PERMIT // THE BUTLER PROPERTY, CARRBORO NC

SD1

PROPOSED SITE PLAN



LEGEND

(A)

STAGE

(B)

PEDESTRIAN ACCESS TO
LIBBA COTTEN BIKEWAY

(C)

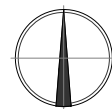
TEMPORARY TOILET FACILITES

(D)

MIXING / SOUND

(E)

FIELD FOR SPECTATORS

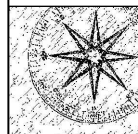


NORTH



ACCESSORY USE SITE PLAN

SCALE = 1:20



Jim Spencer Architects, PA
109-A Brewer Lane
Carrboro, NC 27510
jimspencerarchitects.com

MINOR MODIFICATION TO CONDITIONAL USE PERMIT // THE BUTLER PROPERTY, CARRBORO NC

SD2

ACCESSORY USE SITE PLAN